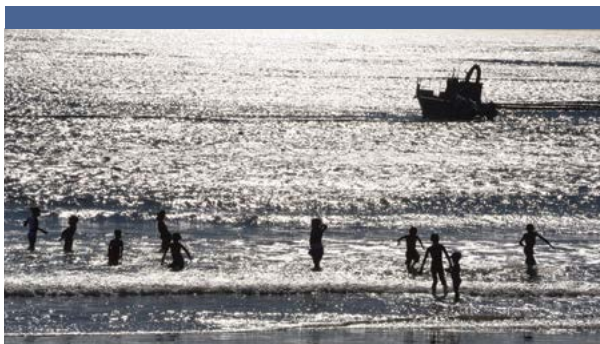


Experience Northern Cape

South Africa



2016 Edition



www.experiencenortherncape.com



THE DIAMOND
ROUTE



DE BEERS
GROUP OF COMPANIES



DEBSWANA

Mining for holiday accommodation ideas?

Explore Kimberley's self-catering accommodation options at two of our finest conservation reserves, Rooipoort and Dronfield.

Call 053 839 4455 to book.

ROOIPOORT

Activities

- Game viewing
- Bird watching
- Bushmen petroglyphs
- National Heritage Site

Accommodation

Rooipoort has a variety of self-catering accommodation to offer.

- "The Shooting Box" sleeps 12 people sharing
- Box Cottage sleeps 4 people sharing
- Luxury Tented Camp accommodation sleeps 16 people sharing

DRONFIELD

Activities

- Game viewing
- Bird watching
- Vulture hide
- Swimming pool
- Self-drive is allowed

Accommodation

- 6 fully-equipped self-catering chalets
- Consists of 3 family units and 3 open plan units

EH 3516

Experience the Northern Cape

Majestically covering more than 360 000 square kilometres from the world-renowned Kalahari Desert in the North to the arid plains of the Karoo in the South, the Northern Cape Province of South Africa offers visitors an unforgettable holiday experience.

Characterised by its open spaces, friendly people, rich history and unique cultural diversity, this land of the extreme promises an unparalleled tourism destination of extreme nature, real culture and extreme adventure.

The province is easily accessible and served by the Kimberley and Upington airports with daily flights from Johannesburg and Cape Town. Charter options from Windhoek, Victoria Falls and an internal aerial network make the exploration of all five regions possible.

The province is divided into five regions and boasts a total of six national parks, including two Transfrontier parks crossing into world-famous safari destinations such as Namibia and Botswana as well as six provincial nature reserves, two of the largest rivers in South Africa and three legendary deserts.



THE NORTHERN CAPE AT A GLANCE



Land Area: 362 591 km².
The largest province in South Africa

Population: ±1.058 million
Population density: 3 per sq km

Capital City: Kimberley
Major Towns: Calvinia, Colesberg, De Aar, Kuruman, Springbok and Upington

Languages:
Afrikaans, English, Nama, SeTswana and Xhosa

Transfrontier Parks: Kgalagadi Transfrontier Park
|Ai-|Ais/Richtersveld National Park
National Parks: Augrabies Falls National Park
Mokala National Park
Namaqua National Park
Tankwa Karoo National Park

The Regions





DIAMOND FIELDS

Memories of Kimberley's days as a tent town still linger today. Many old buildings, museums and one of South Africa's most important art galleries pay homage to the days of the diamond rush. A reconstruction of the original 'rush town' stands alongside the incredible Big Hole, the largest hand-dug excavation in the world, and offers visitors a peek into the vibrant history of Kimberley.

During the Anglo-Boer War, Kimberley was besieged by the Boers for four months. Boer forces surrounding Kimberley showed how a determined, small and under-resourced force could keep the British army at bay for months. But Kimberley also has a rich archaeological heritage, including stunning examples of ancient rock engravings, reflects a past that reaches back to the very origin of humankind.

Barkly West

Barkly West lies just off the N12, northwest of Kimberley in the Northern Cape. The first major diamond rush of the 1870s happened here.

Must-see stops in town include St Mary's, the first Anglican Church of the diamond fields, dated 1871, the Barkly West Museum in the Toll House at the Barkly Bridge. This bridge was the first ever built over the Vaal River and was transported here in sections from the United Kingdom. Also a great place for fishing, boating, canoeing and waterskiing.

Delportshoop

This small town is located 60 kilometres northwest of Kimberley between the Harts and Vaal rivers at the foot of the Ghaap Plato.

Hartswater

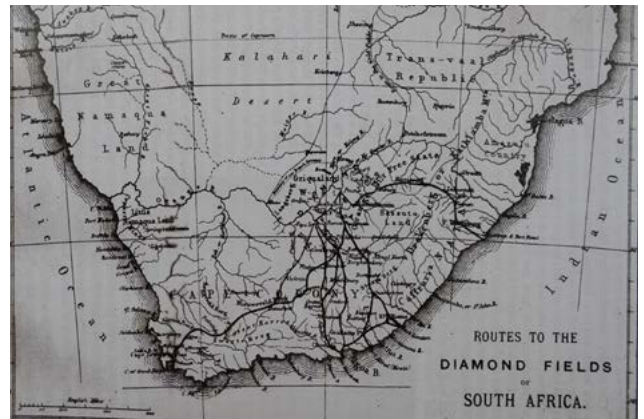
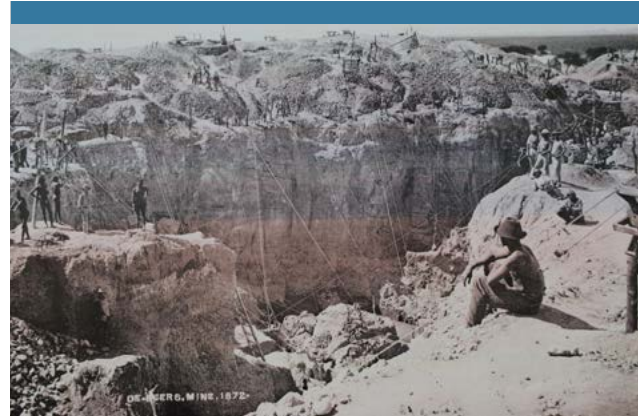
Planned in 1934 to serve the northern section of the Vaalharts Irrigation Scheme, Hartswater's growth has been nurtured by its irrigation canals and today the town is surrounded by trees and tracts of fertile ground. One can visit the Hartswater Wine Cellar and also one of South Africa's national heritage sites, the Taung Heritage site and home to million year old skull of the Taung Child found in 1924 by Prof Raymond Dart.

Jan Kempdorp

This idyllic town serves the southern section of the Vaalharts Irrigation Scheme. Visit the burial site of German and other soldiers and promenade along Poplar Lane, the world's longest lane.

Kimberley

In 1871, diamond deposits found on a hillock dubbed Colesberg Kopje on the farm Vooruitzicht, owned by the De Beer brothers, led to a mad scramble for fame and fortune and the world's largest, hand-dug excavation, the colossal Kimberley Mine or Big Hole. By 1872, the tents and shacks of more than 50 000 fervent diggers crowded New Rush, the mining town surrounding the



Top: Digging the Big Hole, Kimberley. Bottom: Routes of the Diamond Fields of South Africa, 1872.

hillock. In 1873, the town was renamed Kimberley, after the Earl of Kimberley, British Secretary of State for the Colony.

By 1900 Kimberley had become a prosperous town and its complex web of roads is a topographic reminder of a chaotic past. By the time the Kimberley Mine was closed in 1914, it covered 17 hectares, reached down to a depth of 1 097m and had yielded three tons of diamonds.

Today, Kimberley is a prosperous, thriving metropolis with Victorian buildings that complement the more modern buildings of the CBD. Perhaps the most innovative town in South Africa, Kimberley is home to the first South African flying school, the first stock exchange and was the first city in the Southern Hemisphere to install electric street lighting.

To see and do:

- **The Big Hole, Kimberley** - The magnificent era of Diamond Discovery in Kimberley is brought back to life. Take a walk down cobble stoned memory lane and relive the 19th Century with its fascinating buildings. Enjoy an unforgettable underground experience.
- Enjoy the **Belgravia historical walk** featuring 33 of the city's most historical buildings and sites from museums to memorials and gardens.
- Do a **battlefield morning tour**.
- Visit **Kamfers Dam** – largest permanent population of Lesser Flamingo.
- For outdoor enthusiasts there is **Fly-fishing** at the lower Vaal and Riet rivers
- Visit the **Wildebeest Kuil Rock Art Centre** which is situated on a farm belonging to the !Xun & Khwe, who collaborated in making this pristine Khoisan heritage site open to the public. The Centre boasts a superb visitors' centre, a movie auditorium, art & craft shop and tearoom and an audio-guided walk through the rock art site. Tel 053 8337069
- Do a **guided township tour** and learn more about the cultures of the Northern Cape and Kimberley, lunch at a local restaurant and enjoy a taste of the local cuisine.
- **Duggan Cronin Gallery** - Revamped photographic gallery with ethnographic emphasis. The core of the collection consists of some 8 000 photographs taken by Irishman AM Duggan-Cronin between 1919 and 1939.
- **McGregor Museum** - A national monument, built in 1897 at Rhodes instigation as a hotel and health resort. The museum displays natural history, the Siege of Kimberley, a Hall of Religions and the acclaimed Ancestors Gallery depicting three million years of human history in the Northern Cape.
- Visit **Sol Plaatje house**, – ANC founding member and as South Africa's first black journalist contributed greatly to journalism and literature.

Savoy

Hotel since 1892



Established in 1892, the Savoy Hotel and Conference Centre is centrally situated in the heart of Kimberley, approximately 50m from the Town Hall. The Savoy is one of Kimberley's oldest and most enchanting hotels and has lived through the diamond heydays.

Rooms

The hotel has 50 spacious bedrooms including suites that can accommodate up to 119 guests. All rooms are equipped with air-conditioners, TV, tea & coffee facilities and en suite bathroom with either bath and/ or shower. Free Wireless Internet available throughout.

Conference Centre

The Savoy has 14 conference venues suitable for weddings, exhibitions, birthday parties, workshops and events.

Dining

The upmarket **Tiffany's Restaurant** caters for all your dining and entertainment requirements.

19 Old De Beers Road, Kimberley, 8301
Tel: 053 - 832 6211 | Fax: 053 – 831 1458
Email: reservations@savoyhotels.co.za
Web: www.savoyhotels.co.za

McGregor Museum

Atlas Street, Kimberley: 053-8392700
www.museumsnsc.co.za



&

Satellites



Alexander McGregor
Memorial Museum



Duggan-Cronin Gallery



Wonderwerk Cave



Wildebeest Kuli



Magersfontein



Mattanu Private Game Reserve

Kimberley | Northern Cape | South Africa

Facilities

- Five luxury tents
- Luxury suite
- Fully licensed bar
- Restaurant
- Communal satellite TV
- Conference facilities
- Wedding venue
- Sparkling pool
- Wine cellar
- Garden barbecue area
- Own helicopter
- Airstrip and helipad
- Airport shuttle service

Activities

- Game viewing
- Helicopter game viewing
- Quad bike game viewing
- Helicopter fly-fishing excursions
- Game capture tours
- Visiting breeding projects
- Spa treatments
- Fly-in bushveld dinner



Mattanu
Private Game Reserve



Mobile: +27 (0)83 235 1993
E-mail: info@mattanu.com
Website: www.mattanu.com

Barkley West | South Africa
GPS Coordinates:
S28°23'57.71/ E024°28'38.40

Modder River

Modder River lies south of Kimberley near the confluence of the Riet and Modder Rivers and forms part of the N12 Battle Route. Visit the three monuments which commemorates the Battle of Modder River during the Anglo-Boer War.

It is also home to one of the province's top golf courses, Magersfontein Memorial Golf Estate –Contact +27(0) 53 581 9000/ +27(0)83 264 7343.

Warrenton

In 1880, a syndicate bought the western portion of the farm Grasbult on the Vaal River to irrigate the fertile land and to produce vegetables for those working the diamond fields. Named after Sir Charles Warren, diamonds were discovered here in 1888 and mining still continues. Be sure to visit the semi-precious stone factory.

Windsorton

Situated on the banks of the Vaal River, the town started out as a mission station called Hebron. Diamonds were discovered in the river and prospectors flooded the village. The town was named after PF Windsor, owner of the land on which it developed, and diamonds are still found in the area.



So much to do: impressions from Mattanu Private Game Reserve near Barkly West

DIAMOND FIELDS TOURISM

51 Drakensberg Avenue, Carters Glen,
Kimberley
P/Bag X6088, Kimberley 8300

Tel: +27 53 838 0911
Fax: +27 53 861 1538
Email: tourism@fdbm.co.za

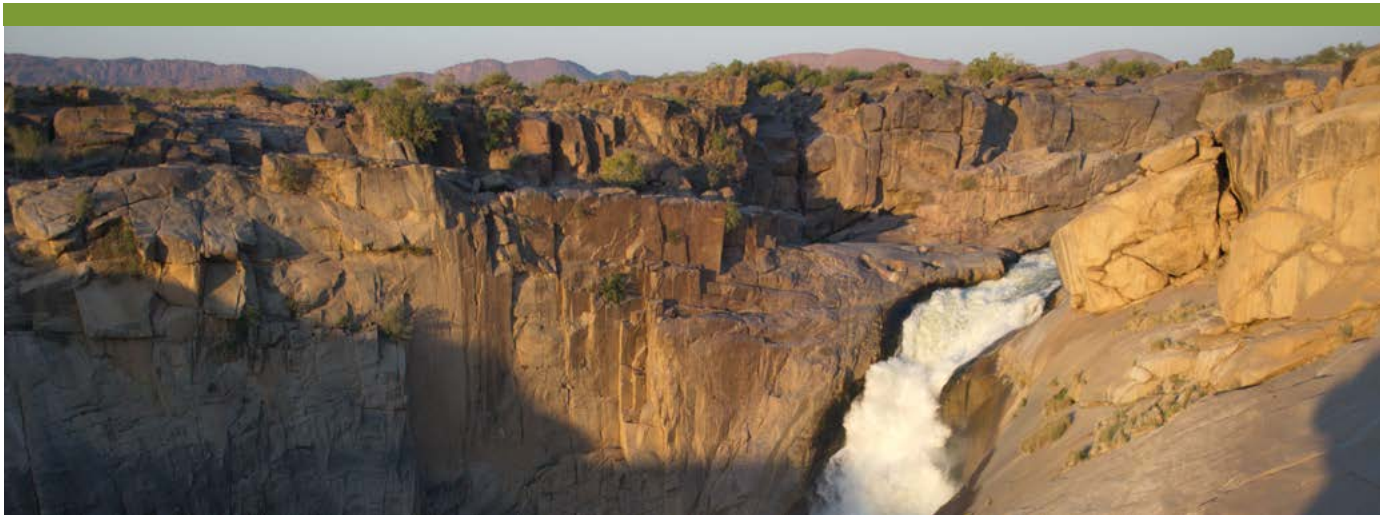


Green Kalahari

The fertile valleys of the Orange River provide a stark contrast to the bleak semi-desert of the Green Kalahari. The majestic river meanders through a giant valley of its own making. At the impressive Augrabies Falls National Park, the deafening fury of torrents of gushing water plummeting 56m down a series of granite cataracts speaks volumes for the river's awesome power. By 1884, the river had been claimed by colonialists and irrigation and development followed.

Today, visitors can travel tranquilly from wine cellars to tearooms in the desert; from a luxurious lodge to the desolation of Verneukpan. Yet, not all is tamed. The mighty Kgalagadi Transfrontier Park, Africa's first Transfrontier Park, comprises almost 3.7 million hectares of sparsely vegetated, red sand dunes and dry riverbeds.

The reserve provides sanctuary for gemsbok, springbok, blue wildebeest, red hartebeest, eland, lion, leopard, cheetah and smaller game. One of Africa's last pristine game reserves, the size of the park allows for the mass migration of different species, a truly awe-inspiring and moving experience.



Top: Augrabies Falls

Augrabies

Augrabies is south west of Upington on the edge of the Kalahari Desert, the huge sand basin that spans from the Orange River up to Angola. Augrabies is surrounded by flourishing green vineyards and the town is predominantly home to workers of the Orange River wine cellars, the second largest co-operative wine cellar in the world.

Augrabies takes its name from the falls – the Khoi word Aukoerebis means 'the water that thunders' – which is definitely one of the major attractions. The river thunders down into the 18 kilometre abyss of the Orange River Gorge. Hiking along the edge of the gorge with truly magnificent views or longer hikes to Moon Rock and the Potholes are truly worth the effort, whilst the birdlife and characteristic quiver trees make a visit here essential.

Daniëlskuil

Daniëlskuil lies at the foot of the Kuruman Hills, 90km south of Kuruman. Tswana occupied the land on which it is built before it became home to the Griqua. Passing through in 1816, missionary James Read named the place 'Fraaifontein' (pretty fountain). Other sources quote 'Koup' and 'Tlakalatlou' (SeTswana for elephant's reed) as its name. The name, Daniel's Den was first found in documents by the missionary Campbell in 1820. The name derives from a natural crater in the limestone formation, reminding observers of the biblical story of Daniel.

Groblershoop

Founded in 1936 and named after a former Minister of Agriculture, Groblershoop is a farming and administrative centre in the Orange River Valley, east of Upington. This is also home of the Boegoeberg Dam, famed for its watersport activities, the roaring red and white sand dunes and its countless quiver trees (kokerboom).

Kakamas

To some, the town's name originates from the Khoi word 'gagamas' (brown), referring to the red clay of the area with which women daub their faces. To most, though, Kakamas is a Korana word meaning 'poor pasture' or 'vicious, charging ox'.

The river islands of Marchand, Zoetap and Neus became a labour colony for the poor. Today these farming ventures are successfully exporting table grapes worldwide.

To see and do:

- Do also enjoy **wine tasting and a wine tour** at the Orange River Wine Cellars.

Kanoneiland

The town is a settlement on the biggest island in the lower Orange River region with virtually every inch of soil under irrigation. Take a leisurely drive between the many vineyards before enjoying a spit roast, home-baked breads, several traditional desserts and locally produced wines.

Keimoes

The origin of this little oasis's name remains in dispute. Legend has it that Korana leader, Klaas Lukas, established a village on the banks of the Orange River near the Tier Mountains. He called the village Keimoes (mouse nest) after the colonies of mice living there.

A more probable origin lies in the Nama words 'gei' (great) and 'mus' (fountain or eye). Semantics aside, Keimoes is a picturesque little town often described as a lost piece of the Boland. Close by is the **Tierberg Nature Reserve** known for its flowering beauty both in winter, aloes and succulents in Spring. Keep a close lookout for the reconstructed waterwheel in the Main Street.

Kenhardt

The town is at the heart of the Dorper sheep farming area.

To see and do:

- Visit the **Quiver Tree (Kokerboom) forest** with its abundance of quiver trees (400 to 500 quiver trees). The forest also offers a number of well maintained hiking routes.
- The town and surrounds also offer an exclusive **San trail**, a guided tour which will take you through several hills where San engravings can be seen.

Top right: At the "Pink shop" in Kakamas
Centre: Vineyards near Keimoes
Below: Kenhardt Quiver Tree Forest





Left: Ground Squirrel
Above: Bushmen in the Askham area

Mier Area (Askham, Andriesvale, Noenieput)

This pristine southern Kalahari wilderness area with dunes averaging 35m in height offers unforgettable and breathtaking scenic sights. The municipal area of Mier includes the communities of Rietfontein, Philandersbron, Loubos, Klein Mier, Groot Mier, Welkom, Askham and Noenieput.

This is the land of one of the world's ancient tribes, the !Khomani San. They produce and sell authentic curios like bows and arrows, beads made out of the ostrich egg shells and animal skin bags. The Askham community developed around the school, which was built in 1931, and the Dutch Reformed Church that serves the whole Kalahari.

To see and do:

- **4x4 Trails** – on Pulai farm.

Tel +27 (0)54 531 0928 or 074 420 4334

- **Kalahari 4x4 Trail** – This tough 250km trail can be done in two or three days offers a thatch and reed hut complete with flush toilet, running water and bar. Contact: +27(0)54 338 0375, 083 493 5041 or mail dantes@kalahari-tours.co.za.

- **!Khomani San Bushmen Project**

Tel +27 (0) 76 613 9095



Mier Area - !Xaus Lodge

!Xaus Lodge provides luxury accommodation in the Kgalagadi Transfrontier Park for eco-tourists and visitors to the Kalahari. The complex consists of a central lodge building and 12 individual chalets, each with its own deck overlooking a vast saltpan and waterhole fed with fresh water. Pronounced 'kaus', this is a place to experience a unique desert environment.

In May 2002, the !Khomani San and Mier communities reached an historic land settlement agreement with the government of South Africa and South African National Parks (SanParks), which restored a large tract of land to the communities that had once roamed or farmed this area. Named the !Ae!Hai Kalahari Heritage Park Agreement, its outcome resulted in the transfer of ownership of 50 000 hectares of land within the boundaries of Kgalagadi Transfrontier Park (KTP) from SanParks to the two communities, who then leased the land back to SanParks.

!Xaus Lodge is a Co-operation Lodge, jointly owned by the communities and the Transfrontier Parks.

Riemvaasmaak - A Community Restored

This spectacular area with its towering granite canyons is owned and run by the community of Riemvasmakers. It was one of the first land restitution projects in South Africa and has much to offer the intrepid traveller. Best accessed with a 4x4 vehicle, the rugged rocky scenery seems to belong on another planet.

Besides 4x4 trails, visitors can enjoy bathing in a natural outdoor hot spring, abseiling, river rafting, San rock art viewing

and guided tours. Traditional dances and meals can be arranged and accommodation is available in comfortable chalets that are perched on the edge of cliff walls.

Olifantshoek

The only town at the foot of the Langeberg Mountain, Olifantshoek is a farming town adjacent to two game ranches on the Namakwari Route. Founded in 1895, the village is called the 'Gateway to the White and Roaring Sands' 78km south of the town. This area offers visitors an abundance of adventure activities.

Upington

This principal town of the Green Kalahari is 820km north of Cape Town and 875km west of Johannesburg. The town of Upington, named after the first Attorney General of the Cape Sir Thomas Upington, was formed by uniting Christian Schröder's 1871 mission station Olyfenhoutsdrift and the Upington police station. Originally known as Kharahais, Upington is the commercial, educational and social centre of the Green Kalahari, owing its prosperity to agriculture and its irrigated lands along the Orange River.

Upington enjoys a summer rainfall and a hot climate, which makes it an ideal winter holiday destination with excellent facilities. Linked by air and road to most parts of the country, the town is accessible, offers excellent accommodation and has a well-developed commercial infrastructure.

Located on the Kalahari-Namaqua-Namibia (Namakwari) route to and from Johannesburg and Cape Town, it is a convenient stop-over for travellers to the Augrabies Falls National Park, the Fish River Canyon, the Namaqualand flowers and the Kgalagadi Transfrontier Park.

One will also cross the mighty Orange River, one of the largest rivers in South Africa and one which provides a bloodline for this predominantly arid region. The river creates a virtual oasis along its banks and contributes to the vibrant agricultural community of the region. Ten percent of the country's vineyards are located in the Upington region, which is also home to the award-winning Orange River Wine Cellars.

To see and do:

- Enjoy **micro or gyro flights**
- Visit the **Mill Community Craft Centre**
- Tour the **Orange River Wine Cellars** the largest in the country and second largest in the world (054 337 8800)
- Do stop by the **Semiprecious Stones shop and museum** and learn more about the beautiful and ancient stones such as beryl, amethyst agate, tourmaline, jasper and rose quartz.
- Visit the **South African Dried Fruit Co-operative**, the second largest and most modern in the world
- Do not miss **Kanoneiland** - a large island in the Orange River with virtually every inch under irrigation. A good stop over for luncheon – the local cuisine offers home baked bread, spit roasts and traditional deserts.
- **Riemvasmaak Community** – visit one of the oldest tribes of Africa – the Nama Bushmen- settlement and refresh yourself at the hot springs.
- Visit the **Augrabies Falls**, as the Orange River approaches the Augrabies Falls it divides itself into numerous channels before cascading down the 56 meter high waterfall. The river then continues its path through an 18 kilometre gorge. The sight and sound of the power of the water will not be easily forgotten.

GREEN KALAHARI TOURISM

30 Swartmodder Avenue, Upington
Private Bag X6039, Upington 8800

Tel: +27 54 337 2800

Fax: +27 54 337 2800

Email: greenkal@webmail.co.za

www.greenkalahari.co.za



african Vineyard guest house



Kanoneiland · Keimoes · Upington

Tel & Fax: 054 491 1400

Cell: 083 461 1724

Email:

elmariedeb@vodamail.co.za

www.africanvineyard.co.za

*Lilizela Winner Northern Cape
Category 4-Star Guest House
and TripAdvisor: "Certificate of Excellence"*





KALAHARI

The sundrenched Kalahari with its endless horizons evokes memories of a land before time. Beneath the Kalahari's blanket of red sand hides a treasure trove of iron, manganese and other precious ores as well an abundance of wildlife. The Kalahari is home to 40 raptor and vulture species (of 67 species in South Africa) and seven owl species (of 12 species nationally).

Flowing from an amazing dolomite spring, the beautiful Eye of Kuruman feeds forests of majestically tall camel thorn trees silhouetted against the seamless horizon of the great, mystical and miraculous Kalahari Desert.

Black Rock

This mining town lies twenty-five kilometres from Hotazel and is home to the province's Assmang's underground manganese mine. The town also has its own landing strip.

To do and see:

- View the **manganese mineral collection** - Assmang Geology Office. Tel +27(0) 53 751 5201 or +27(0) 53 751 5228 .
- Mine Tour – Tour the spectacular **tunnels and rock formations** of Black Rock's manganese mine. Tel +27 (0) 53 751 5201.

Dibeng

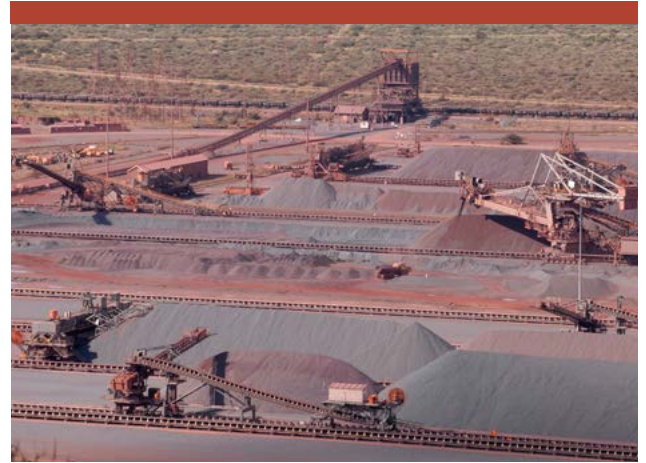
Dibeng (first drinking place) was named by the SeTswana and is located on the banks of the dry Gamagara River. The town has strong Dutch Reformed roots with the congregations at Kuruman, Kathu and Olifantshoek having seceded from the original congregation in Dibeng.

Hotazel

An important mining town, Hotazel is set on a bush-covered, featureless plain. Hotazel is home to Samancor's Mamatwan open-quarry manganese ore mine and sinter plant, Wessels underground manganese ore mine and railway terminus.

Below: the Sishen championship golf course

Top right: Sishen Iron mining - one of largest open cast mines in the world.



Kathu/Sishen

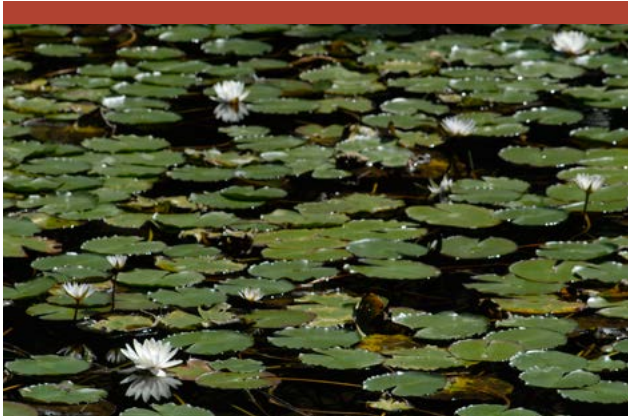
Kathu (the town under the trees) came into being because of the iron ore mining activity in the Kalahari and strategically connected by road, rail and air through nearby Kimberley. Some of the world's longest ore trains travel through harsh territory to offload their precious cargo at Saldanha Bay.

It is also home to South Africa's most beautiful desert golf course.

To see and do:

- Camping, caravanning, fishing and horse-riding at **Khai-Appel Recreation Resort**. +27(0) 53 723 2263





Water lillies covering the "Eye of Kuruman" - one of the strongest natural springs in the Southern hemisphere

Kuruman

On the Ghaap Plateau 1 131m above sea level, Kuruman is the principal town on the Kalahari section of the Namakwari Route. The origin of the town's name is uncertain but it is generally accepted as being a variation of the name of an 18th-century San leader Kudumane.

Known as the 'Oasis of the Kalahari', Kuruman is blessed with a permanent and abundant source of water. More densely vegetated than most oases, its water flows from Gasegonyana, commonly called The Eye. The spring delivers 20 million litres of water daily to 71 000 inhabitants and even nurtures an endangered species of cichlid fish.

Scottish missionary Robert Moffat, the first person to translate the Bible into SeTswana, lived here for 50 years (1820-1870) and built the famous Moffat Church, which was completed in 1838. The Moffats baptised their first converts in 1829, taught them to read, and, using their own printing press, printed the first Bible in Africa.

To see and do:

- The abundant game bred and culled in the area is fast turning it into a mecca for hunters.
- Visit the Wonderwerk Cave and Rock Paintings – archaeological excavations of the 140m long cave dates back over a million years and finds include Acheulean hand axes and cleavers from the Stone Age and artefacts dating to the Later Stone Age.

Van Zylsrus

A popular stopover for tourists on their way to the Kgalagadi Transfrontier Park, Van Zylsrus is surrounded by the rust-red dunes of the Kalahari and offers true Kalahari hospitality and a paradise for biltong lovers.

The Pygmy Falcon is the smallest falcon in the world and can be found throughout the Kalahari region.



KALAHARI TOURISM

4 Federal Building, Mynbou Street,
Kuruman
PO Box 1480, Kuruman 8460

Tel: +27 53 712 8700
info@taologaetsewe.gov.za

www.taologaetsewe.gov.za



KAROO

With the first rains, the seemingly arid soil of the Karoo bursts into abundant life, its hardy succulents complementing the sweet grasses on which the region's merino and fat-tailed sheep graze.

Small, isolated but welcoming villages, distinct Karoo architecture and imposing churches rest in valleys between desolate, flat-topped koppies. Take a short trip from Colesberg, an essential stopover for all travellers and a sheep-farming centre, to Hopetown, the scene of South Africa's first recorded diamond find.

On return, travellers pass the self-proclaimed Afrikaner Volkstaat Orania en-route to Vanderkloof Dam and the Rolfontein Nature Reserve on its shores. Indulge in water sports or relax on its secluded banks, which stretch 100km to the Doornkloof Nature Reserve on the man-made lake's southern shores. Visit, hunt or hike on game farms and nature reserves teeming with every species of antelope.



Britstown

The town was named after Hans Brits, who accompanied David Livingstone on a venture to the interior and then settled on the farm Gembokfontein. A private irrigation scheme was started by the Smart Syndicate in 1885 and built two dams, planted lucerne and wheat and reared karakul sheep and Clydesdale horses.

To see and do:

- View **Khoisan Rock Art** – Important archaeological heritage sites can be found on the farms Brakwater, Keurfontein, Maritzdam and Omdraaivlei. Visitors do require permission to enter, please contact the local tourist information office for enquiries.
- **Touch the Stars** - Excursions to marvel at the sparkling Karoo night sky can be arranged by the Transkaroo Country Lodge.

Campbell

This village on the edge of the Ghaap Plateau was one of the earliest centres of Christianity north of the Orange River. Originally Grootfontein or Knoffelvallei, the town was renamed to honour the Reverend John Campbell, an avid traveller and missionary in 1813. Renowned for its spectacular dolomite rock formations, many springs, Karee and Wild Olive trees, Campbell has a multi-faceted history and has been home to San, Korana and later Griqua settlers drawn by the springs.



The "Meerkat-Teleskopes" - the first phase of the SKA Project north of Carnovon

To see and do:

- Visit the historical **Aloe Nature Reserve** on the edge of the Ghaap Plateau.
- Interested in the Anglo-Boer War? Visit **Fabersput Battlefield** and the monument to Kasie Briedenham and the grave of Oupa Swartbooi, a British spy.

Canarvon

Communities of Xhosa moved up to the Orange River as early as 1795. One group settled at Schietfontein, which was served by a Rhenish mission, and a village named Harmsfontein was established in 1860. In 1874, it changed its name to honour the British Colonial, Secretary Lord Carnarvon. The district is well known for its corbelled houses, built between 1811 and 1815. Carnarvon is set among flat-topped hills and is one of the region's busiest farming centres.

It continued to be an important town even in modern days. South Africa is ready to host the world's most powerful radio telescope, the Square Kilometer Array (SKA), and Carnarvon has been identified as the host town.

To see and do:

- Visit the **Tortoise Reserve** home to 60 mountain tortoises.



Colesberg

Surrounded by koppies and flanked by the towering Coleskop, it is evident where the former name Toverberg (Magic Mountain) derives from, it is visible from 40km, but appears to get no closer. In 1814, a mission station was built here in the hope of bringing peace to the volatile frontier area of the Cape Colony.

The town was re-named after Sir Lowry Cole, then Cape Governor and was also home to the former Transvaal Republic's President, Paul Kruger. Born in Cradock in 1825, he is believed to have spent his formative years on the farm Vaalbank in the town district.

Today, Colesberg is a traveller's oasis on the N1 national highway between Cape Town and Johannesburg route and offers many attractive accommodation establishments. In a sheep-farming area spreading over half-a-million hectares, greater Colesberg breeds many of the country's top Merinos. It is also renowned for producing high quality racehorses.

To see and do:

- Take a slow **walk through the town** and enjoy the many original buildings, still in pristine condition, and fine examples of early Karoo architecture. The Information Office organises a three-hour walking tour that offers a grasp of local history and a visit to many of the original reed-ceilinged, yellowwood beamed homes.
- Visit the **Anglican Church** a beautifully decorated church built in 1854, designed by Sophia Gray (wife of Bishop Gray).
- There is also the **Colesberg Kemper Museum** in Murray Street,

dating to 1861. It includes the Kemper Collection, Anglo-Boer War photographs and artefacts, a 19th century toy collection, a Karoo Nomad photographic exhibition and allows visitors to relive Erasmus Jacobs' find of Eureka, the first recorded diamond found in Hopetown, South Africa.

- For the outdoor enthusiasts there are several **hiking and mountain biking trails** in the area.

- **Anglo-Boer War** Enthusiasts can visit the Grenadier Guard Rock, Memorial Hill and the military cemetery where more than 400 men from 20 regiments are buried. Weekend tours include a visit to Norvalspont prisoner-of-war camp and cemetery.

Tel: 051 753 0678.

- Visit the **Doornkloof Nature Reserve**; located on the south-eastern banks of the Vanderkloof Dam, the reserve features kudu, brown hyena, mountain reedbuck, steenbok, grey duiker, bat-eared fox, aardvark and aardwolf. There is a hiking trail, an overnight hut and horse trails are available.

De Aar

De Aar is the third largest town in the Northern Cape and is centrally located on the main railway line between Johannesburg, Cape Town, Port Elizabeth and Namibia. The junction was the second most important railway junction in South Africa, with 110km of railway lines, including 29 rail-tracks. The name De Aar refers to the underground water supply in arteries, which supplies all of De Aar's water from 68 boreholes.

To see and do:

- For bird lovers De Aar is the southern home of the **Lesser Kestrel** during summer, having flown in from Europe and Central Asia. Numbers can peak at more than 10 000 birds in December and January.

- For **paragliding** enthusiast the well-established paragliding school not only offers a thrilling bird's eye view of the Karoo landscape, but hosts regular events attracting local and international paragliders in search of world long-distance records, for which the local conditions are ideally suited. More than half of the world's long-distance records have been set in De Aar.

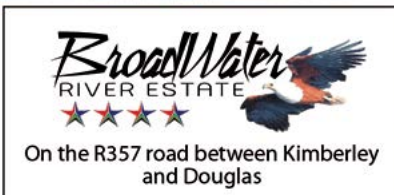
- Visit the **house of Olive Schreiner**, famed author and feminist who wrote *Women and Labour*. The house now serves as a restaurant.

Douglas

The town was founded in 1838 as a mission station on the farm Backhouse by the Reverend Isaac Hughes. In 1867, a group of Alabama settlers from Grahamstown signed an agreement giving them the right to establish a town. It was named after General Sir Percy Douglas, Lieutenant Governor of the Cape Colony. Near the confluence of the Orange River and its main tributary the Vaal River, Douglas is a thriving, fast-growing town surrounded by a wealth of agricultural and stock farming ventures.

To see and do:

- Visit the **Douglas Wine Cellars** – The cellar produces a wide variety of excellent table and dessert wines.
- For the fishing enthusiasts there is excellent **freshwater fishing** on the Vaal and **river rafting** on the Orange River.



4-Star Accommodation • Houseboat • Camping • Weddings
River-Restaurant • Conferences

082 3322266 | broadwater@vodamail.co.za
www.broadwater.co.za



The old hotel in Griquatown

Griquatown

In 1803, the London Missionary Society extended its mission north of the Orange River among a mixed community consisting of members of a Chaguriqua tribe, 'bastards' (of mixed origin) from Piketberg and local tribes like the Korana and Tswana. In 1813, at the instigation of Rev John Campbell, the 'bastards' renamed themselves Griqua and the place called Klaarwater became Griquatown. Griquatown is known for its semiprecious stones, tiger's eye and jasper. The town is a centre for stock breeding.

To see and do:

- Visit **Andries Waterboer's Grave** with its two cannons named "Old Niklaas" and "Old Grietjie". These were gifts from Queen Victoria and still guard his final resting place.
- Also stop by the **Mary Moffat Museum** – The building dates back to 1826 and was originally a mission church. The museum was named after Mary, daughter of Robert Moffat and wife of Dr David Livingstone. A pulpit used by Moffat, Waterboer and Livingstone is still on display.

Hanover

The town was once part of the Graaff-Reinet district and known as Bo-Zeekoeirivier. The growing farming community needed a community centre and the 8 656ha farm Petrusvallei was bought for 33 333 Rixdollars (R5 000) in 1854. The former owner asked that the proposed town be called Hanover as his ancestors came from the German city.

To see and do:

- **Historical walk** through the town and discover old furrows and historic buildings
- Visit the **Cenotaph Memorial** commemorating WW2.
- A must is also to visit the **house of Olive Schreiner** – The famous author lived here during the Anglo-Boer War.

Hopetown

On 18 February 1854, a town was laid out with a Dutch Reformed Church - a rough frontier-type building made of mud and dung. The origin of the name Hopetown is odd as the widow of the first owner of the farm, De Kalk, wore a small anchor.

A servant was told it represented hope and made an imitation from tin which was nailed to the farm entrance. In 1866 the famous Eureka diamond was found and two years later the 83.5 carat 'Star of South Africa' diamond was also discovered in the area. Today, Hopetown is a farming town.

To see and do:

- See the **Convict Stone** – For lack of a holding cell in the old magistrate's building, convicts were secured to this stone.
- For the **sporting and adventure enthusiasts** there are, ab-seiling, angling, bird-watching, game-viewing, hiking, 4x4 and white water rafting.

Hutchinson

When the discovery of diamonds blazed a trail to the interior, the railway followed it. It bypassed Victoria West by 12km, necessitating a railhead. This developed into a village and was named after Cape Governor Sir Walter Hely Hutchinson. A branch line to Calvinia was built in 1904.

Loxton

Originally the farm Phizantefontein, Loxton was bought from AE Loxton by the Dutch Reformed Church in 1899. Built to serve the sheep farming community, it became a municipality in 1905.

To see and do:

- Great **Hiking Trails**
- Visit the **San Rock Art** Engravings at Kafferskraal.

Marydale

Established in 1903 by the Dutch Reformed Church, Marydale was named after the wife of Mr GP Snyman, owner of the farm on which the town was laid out.

To see and do:

- Visit the **Kokerboom (Quiver Tree) Forest**.

Norvalspont

Norvalspont as the word 'pont' in its name suggests (a pont is a ferry boat or punt), lies on the southern banks of the Orange River minutes from the Gariep Dam. It lies on the borders of the Eastern Cape and Free State. The town lies 39 kilometres along the R58 from the nearest neighbouring town of Colesberg. It is a pretty town surrounded by hills on a particularly beautiful section of the Orange River with the Bethulie hills forming the skyline.

Norvalspont is also the site of two historic bridges that bring rail and road into town. The reason for the town's existence goes back to the 1840s when John Norval from Scotland started a ferry service across the Orange River, naming the pont service 'Glasgow' after the town from which he originated.

Nearby Colesberg deep in the heart of the Karoo is regarded as the halfway mark on the N1 between Cape Town and Johannesburg.

Noupoort

In 1881, the railway line from Port Elizabeth ended on the farm Carlton. With the diversion of the railway line to Colesberg in 1883/4 a station was built on part of the farm Hartebeeshoek of Mr Barend Kruger. The station was named Naauwpoort after the adjacent farm. In 1963 the name was changed to Noupoort.

To see and do:

- For outdoor enthusiasts there is the Brulberg **Hiking trail** and several **4x4 & Mountain Biking Trails**.
- Visit the **Rural Monument** – Erected to celebrate the centenary of the Great Trek.



The Monument Koppie near Orania

Orania

Orania, originally built in 1970 for construction workers on the impressive Orange River Project, stood empty for years until a group of Afrikaners purchased the town and surrounding land as a pilot project and starting point for Afrikaner settlement and the establishment of an Afrikaner Volkstaat.

Orania offers an example of the 'traditional' Afrikaner way of life and also demonstrates the ingenuity of a marginalized community with advanced irrigation techniques, implemented in close co-operation with pioneers in Israel. Orania has the only fully organic vineyards in Southern Africa, a sophisticated dairy farm and cultivates and exports Pecan nuts.

To see and do:

- The **Cultural History Museum** which features the Felix Lategan collection of firearms, some of which date back to the 18th Century.

Petrusville

Named after Petrus van der Walt, owner of the farm Rhenosterberg, the town lies in a fertile valley surrounded by a cluster of high hills.

To see and do:

- Visit the **Pillar Fountain** which was erected in honour of King Edward VII
- There are still some **trenches from the Anglo-Boer war** to be found in the koppies.

Philipstown

Founded in 1863 as a church centre, the town was named after Sir Philip Wodehouse, Governor of the Cape.

To see and do:

- See some **Khoisan Rock engravings** at Kareepoort.
- A selection of **National Monuments**, such as the Reformed Church, the magistrate's offices, the old prison museum and Teich House.

Prieska

On the south bank of the Orange River at the foot of the Doringberg, lies Prieska. It was originally named Prieschap, a Khoisan word meaning 'place of the lost she-goat'. The site of the town, founded in 1882 and renowned for its semiprecious stones, was a fording place used by early travellers.

To see and do:

- Visit **Die Bos Nature Reserve** featuring indigenous trees, shrubs and an abundant bird life. It also offers picnic spots and angling.
- Cross on the **suspended bridge** across the Prieska River.
- There are a number of **hiking trails**, the Oranjezicht and T'Keikampspoort hiking trails.

Richmond

The town was established in 1843 when the presbytery of Graaff-Reinet formed a new congregation for that area. A portion of the farm Driefontein was bought and erven were sold on 19 April 1845 during a communion gathering. The town was named after the Duke of Richmond from Kent, father-in-law of the Governor of the Cape at that time, Sir Peregrine Maitland.

To see and do:

- Visit the **Fossil Footprints and Bat Cave** where one can see 60 clear claw-like footprints, presumably from the Aulacephalodon that lived about 250 million years ago.
- Spend some time in the **Market Square Garden** and see the old Market Bell, the Memorial Needle and the Mountain Tortoise sanctuary.

Strydenburg

On the verge of a large pan filled with salty water during the rainy years, Strydenburg (the town of strife) received its doleful name after incessant squabbling over the town's name! Strydenburg was laid out by the Dutch Reformed Church on the farm Roodepan in 1892.

To see and do:

- Visit the **Aloe Garden** in Church Street and linger a little.
- The town also offers excellent examples of **Karoo architecture**.

Three Sisters

Three Sisters is about 75 kilometres outside Beaufort West and can be sighted from the road junction to Victoria West. It is not a town, but a series of three very distinctive hills almost in the shape of rondawels, on the right-hand side of the road for north-bound travellers.

Three Sisters and its filling station has become an icon in landmark along the N1 highway. A stay on a farm or accommodation establishment in and around Three Sisters, promises gorgeous scenery, tranquillity, veld and mountains for hiking, typical Karoo hospitality and delicious home-reared lamb for dinner.

Below: The "Three Sisters"

Right page: Vanderkloof Dam



Van Wyksvlei

Established in 1880 and named after a local farmer, Van Wyksvlei lies close to the first state-funded dam, which was built in 1882 and is still in use today.

To see and do:

- View **San Rock Engravings** at Springbok Oog
 - Visit the **Van Wyksvlei Dam** with its unique, earthen wall.
- Tel +27(0)53 382 3029

Vanderkloof

Named after the farm on which the Vanderkloof Dam is situated, the town was built to house the dam builders. Today it is a flourishing holiday resort. It boasts the highest dam wall in the country and links the Northern Cape to the Free State.

To see and do:

- **Vanderkloof Dam** offers a myriad of activities especially water sports including sailing, skiing and windsurfing.





Victoria West

Established in 1843 and named after Queen Victoria of England, Victoria West marks the beginning of the Diamond Way along the main route from Cape Town to Kimberley. In 1866, diamond fever was sparked with the discovery of the gems at first Hope-town and then Kimberley.

To see and do:

- Visit the **Apollo Theatre**, the only surviving example of a 1950's art deco cinema in South Africa. It hosts regular film festivals and has been declared a national heritage site.
- The **Victoria West Nature Reserve** offers hiking trails and is home to the rare Riverine Rabbit.

Vosburg

Established on the farm Processfontein in 1895, the town was named after Mr J Vos and the Van Rensburg family. The town features more than 22 national monuments.

To see and do:

- Study **Khoisan implements** at Mrs van Heerden's home.
- **Rock Engravings** – Keurfontein farm

KAROO TOURISM

45 Voortrekker Street, De Aar
PO Box 42, De Aar 7000

Tel: +27 53 632 9100 / +27 53 631 4176

Fax: +27 53 631 0105

Email: deaar@emthanjeni.co.za

Website: emthanjeni.co.za



NAMAKWA

Each spring the dormant arid winter lands come alive with a flamboyant spread of wild flowers including many rare, unique and endangered plants. Adapting to a climate defying all life, they survive and thrive in a beautiful land of blistering extremes.

Track the Old Copper Way and be immersed in the colourful histories of towns deeply rooted in a proud mining tradition. Take a raft or canoe trip on the Orange River through deep canyons, go for a 4x4 adventure in the haunting moonscapes of the saw-toothed mountains of the |Ai|Ais/Richtersveld Transfrontier Park or enjoy the cultural interaction of the Nama people during a donkey ride in Eksteenfontein. Be entranced by a star-studded galaxy at the South African Astronomical Observatory in Sutherland or enjoy the timeless serenity of a palm-fringed cathedral in Pella.

The land of the Nama is a land of mystery, magic and contrasts where the indescribable beauty has been moulded by an unforgiving climate.



Old Steam Lokomotive in Aggeneys

Aggeneys

One hundred kilometres east of Carolusberg on the Springbok Pofadder road, Aggeneys (place of water) is a copper, zinc, silver and lead mining complex. Set in an oasis, it offers a welcome round of golf.

Alexander Bay

After diamonds were discovered along the west coast in 1925, Alexander Bay became renowned for its mining activities. The resulting 'diamond rush' led to the Diamond Coast rebellion of 1928.

Located at the mouth of the Orange River, the town is no longer a high-security area and no permits are needed. The town takes its name from Sir James Alexander, who shipped the Richtersveld copper ore he mined, in barges down the Orange River for export from this bay.

To see and do:

- The **Lichen Field** with more than 26 different species of lichen can be found atop a hill east of the town.
- Enjoy the **Nama Culture** – To be experienced at the four communities of the Richtersveld namely Sanddrift, Kuboes, Lekkersing and Eksteenfontein on the banks of the mighty !Garib (Orange River) which is perfect for great angling.

Brandvlei

Brandvlei was developed in the heart of Bushmanland where 'Ou Brand', a 19th century trek boer, settled. The town was cut in two by a flash-flood in 1961, but recovered to form a municipality the next year.

To see and do:

- For birding enthusiasts the salt pans are annually transformed into **bird sanctuaries** after the summer rains (Nov-Mar).

Calvinia

Founded in 1851 and named after religious reformer John Calvin, Calvinia lies at the foot of the dolerite-topped Hantam (Khoi for 'where the red bulbs grow') mountains.

Calvinia is the region's key point of growth and one of the country's largest wool-producing areas. Like Sutherland, Calvinia enjoys 80% starlight and the night sky is as much an attraction for city dwellers and astronomers as the rare sterboom is for botanists and horticulturalists.

To see and do:

- Visit the **Akkerendam Nature Reserve** – The reserve has two trails across the Hantam Mountain catering for the fit and the frail with scenic vistas, the amazing sterboom and up to 65 species of birds.
- Do also visit **Hantam House** – Built by Field Cornet A van Wyk in 1854, Hantam House is in Cape Dutch style with a concave-convex gable and the original cedar wood woodwork. Traditional delicacies are served in an exclusive coffee house built in the original kraal.





*Top: Mountains near Concordia in flower season
Right Page: The rugged beauty of the Richtersveld*

Concordia

Situated 22km north east of Springbok, it was originally a Rhenish mission station formed in 1852. Copper was mined in the area from 1853 to 1933.

During the Anglo-Boer War, the Boers used Concordia as their headquarters during the siege of Okiep. Some old Cornish-style houses as well as the original granary, used as a hospital by the Boer commandos, still remain.

To see and do:

- **Orbicukle Hill** – This national monument lies west of Concordia and exhibits the best example of orbicular diorite in the country. This rare rock texture is the result of granitoid magmas separating while in a fluid state and forming concentric internal banding.

Eksteensfontein (Richtersveld Communities)

This settlement in the Richtersveld was named after Reverend Peter Eksteen, who served the first church congregation in 1945. The town is mostly populated by a group originally known as 'Bosluis Basters,' who settled there in the 1940's as a result of the apartheid's separatism policies of the day. Today, the close-knit community thrive on stock farming and working on the various diamond mines in the Richtersveld.

To see and do:

- Enjoy **donkey cart rides** from Eksteenfontein to the Rooiberg Conservancy Area.
- Botanist and outdoor enthusiasts will enjoy a visit to the **Rooiberg Conservancy** which features a wide variety of



succulents, some of which are very rare. Guided 4x4 routes are also available.

Fraserburg

Named after a Scottish cleric and immigrant Rev Colin Fraser and a certain church elder Meyburg, Fraserburg was founded in the West Nuweveld in 1851.

To see and do:

- **Gansfontein Palaeo Surface** – The rocks exposed here were originally deposited some 250 million years ago. On the farm Riethuisies, a distinct trace fossil of a gastropod can be found – the same trace fossil was recently found in Antarctica and the site is of great importance to palaeontologists.

- Visit the **Old Parsonage Museum** which was erected in 1865 for Reverend CA Bamberger, the first minister to the newly established congregation at a cost of £1100. It has a unique floor plan as four of the interior walls are curved. The building currently houses a museum collection and an exhibition of fossils.

Garies

In 1845, Garies sprang up on land given to the Dutch Reformed Church by the owner of the farm Goedeverwagting. Originally named after the farm, its present name, a Khoisan word meaning 'couch-grass', was given it by former Cape premier John X Merriman. A flood of visitors descends during the flower season. Garies is the gateway to the floral display of the Kamiesberg and it is spectacularly transformed after the first spring rains.



Hondeklip Bay

Formerly a favoured holiday destination for farmers, fishermen and divers, Hondeklip Bay is separated from Springbok by 104km of gravel road, the Messelpad Pass and Soebatsfontein, a quaint village built next to a spring at the foot of the escarpment.

Copper ore brought by ox-wagon from Springbok was exported from the Hondeklip Bay harbour before the port was supplanted by Port Nolloth. The harbour now serves fishing and diamond-mining boats.

To see and do:

- **Scenic Drives** – Circular routes back to the N7 make for spectacular scenic drives during the flower season.

The small fishing harbour of Hondeklipbaai





Kamieskroon

South of Springbok, Kamieskroon is set among the granite rock formations of the Kamiesberg range. The town was started in the 1860s about 7km north of its present position. It took the name Bowesville (later Bowesdorp) after the district surgeon, Dr Henry Bowe. Kamies might derive from the Nama word 'kam', meaning two - referring to the twin peaks of the mountain.

To see and do:

- Be sure to visit the **Namaqua National Park** – This 103 000ha Park located 21km north-west of Kamieskroon is open daily. A circular drive and short walking trails let the visitor experience the incredible floral diversity of the area. The park has ablution and picnic facilities as well as a new rest camp. Tel +27 (0) 27 672 1948.

Kleinzee/Koingnaas

The Diamond Coast holds a beauty and mystique of its own with its cultural diversity and mineral mining. These two towns and the diamond mines that support them offer an interesting insight into the lifestyle of the modern miner.

To see and do:

- **4x4 Tours – Guided Shipwreck and Strandveld trails** in the comfort of your own 4x4 vehicle. Reservations are essential for all guided tours.
- **Cape Fur Seal Colony** – The guided historical mine tour also takes you to the resident colony of more than 450 000 seals.



Top left: Church building in Kamieskroon
 Top right: the "Aristea"-ship wreck near Hondeklipbaai
 Middle: Gemsbok in the dunes near Kleinzee
 Bottom: The abandoned copper mine in Nababeep

Komaggas

About 30km west of Springbok near the Spektakel copper mine lies the town of Komaggas. Speculation about the origin of the name is rife. As the low red slates resemble the layers of an animal's stomach, it is thought that it might mean place of many stomachs (Khom-s (stomach) and xa - a lot of). The surrounding area features well-preserved ovens used by the Nama people for cooking and baking. Wool is spun and woven at a local shop.

Loeriesfontein

The town is said to have been named after a Jewish travelling salesman named Lurie or alternatively after the Loerie bird (Turacu corythaix).

To see and do:

- **Quiver Tree Forest** – one of the world's largest quiver (Aloe dichotoma) forests. These trees can grow up to 6 metres tall, store water in their trunks, resist drought indefinitely and can live up to 400 years. The Khoisan's use of their bark for quivers gave them their colloquial name.
- **Windpump Museum** – one of only two in the world (the other is in the USA). There is also an interesting museum in the old Baptist Church.

Nababeep

North of Springbok, Nababeep combines two Nama words, naba (hump of an animal) and bib (small spring). Mining began in the 1850s and export ore was taken to Port Nolloth by train since 1876. The mine closed during the copper slump of 1919, but reopened in 1937. It is home to the Okiep Copper Company and the region's largest copper-mining town.

To see and do:

- Visit the **Mining Museum** where Clara, a narrow-gauge steam locomotive used to rail copper ore to Port Nolloth, is on display.

Nieuwoudtville

Between 1700-1740 clashes between trekboers and indigenous people led the trekboers to move to the top of the Bokkeveld escarpment in the 1800s. Nieuwoudtville is known for its unique vegetation with the biggest variety of indigenous bulbous



*Top: The over 100m high waterfall near Nieuwoudtville
Above: Quiver Trees near Loeriesfontein*

plants in the world, the 100m high Nieuwoudtville Falls on the Doring River and its flat landscape covered by wheat, heather and proteas. Eight kilometres west of town, the Vanrhyns Pass offers majestic views over the Knersvlakte on the descent to Namaqualand's coastal terrace.

To see and do:

- **Oorlogskloof Nature Reserve** – 10km south of town, the rugged series of deep ravines incised by the Oorlogskloof River offers hiking trails (two 50km four-day hiking trails and two 1-day walks) and is home to several rare bird species, including booted eagles, black storks and gymnogene.
el +27(0)27 218 1159.
- The **Nieuwoudtville Falls**, a 100m wonder on the Doring River.

Okiep

Derived from the Nama word 'U-gieb' (great, brackish spring) Okiep was the world's richest copper mine until production ceased in 1918. Okiep is the oldest mining town in South Africa with copper first discovered and mined in 1855.

Eight kilometres north of Springbok, it echoes copper's boom years. Nine-hundred defenders, mostly Cape Copper Company employees, built nine blockhouses and repulsed the concerted effort of General Jan Smuts' forces to take the town. Today, on a hillock, only the remnants of stone walls remain.

To see and do:

- **Anglo-Boer War** – The remains of the Crow's Nest Blockhouse can be seen on a hill north east of Okiep. It fell to the Boers and was occupied by them for most of the siege before being retaken. Fort Shelton saw the major part of the action during the siege and was manned by a six pounder gun. Graffiti made by the Cape Town Highlanders and Cape Garrison Artillery can be seen in the Okiep East Mine, while casualties from the war were laid to rest in the Okiep graveyard.
- **Cornish Pump House** – A fully intact steam engine is the only remaining pump house of its sort in the Southern Hemisphere and was used from 1882 to pump water from the mine.

The Cornish Pump House in Okiep



Onseepkans

The name is either a combination of three Nama words 'tconsiep' (an elbow projecting into the river), 'nias' (a rocky surface), and 'tcaans' (thorn trees), or it is a derivative of the Nama word meaning 'watering place for cattle'. Whatever its origin, the name did not deter a white prospector Edwells from settling on the Orange River in 1909.

Farmers bought 12 000ha of land from Edwells in 1916 after realising the irrigation potential. A 10km canal serving 70 families was built by Japie Lutz and citrus, lucerne, beans and other crops are still grown at Onseepkans today. The village itself was a mission station run by the Roman Catholic Father of Pofadder.

To see and do:

- **Quiver Tree Forest** on the farm Coboob.
- **Ritchie Falls** – on the Pofadder Hiking Trail. The falls can only be reached by foot and is the only place where the Orange River flows from west to east.

Pella

Pella was founded by the London Missionary Society in 1814. A sanctuary for Khoisan driven out of Namibia, the village was named after a similar refuge from biblical times. The mission was abandoned in 1872 because of drought, but the Roman Catholic Church reopened it in 1878.

The Old Cathedral is surrounded by date palms, which gives it a curiously Arabian atmosphere. Using an encyclopaedia as their building manual, it took two missionaries seven years to complete. A spring in the sandy plain surrounding the mission provides water for the figs, grapes and pomegranates grown at Pella. Around this source of life is a walled garden. Pella's dates are sold in wooden boxes to mail-order customers all over South Africa.

Activities & Attractions:

- **4x4 Trail – Namakwa 4x4 Exploration.**
Tel +27(0)27 712 8035/6.
- **Catholic Cathedral** – Built over seven years by Fathers JM Simon and Leo Wolf, both of whom are buried in the church's grounds.

Pofadder

A mission station was founded here by Reverend Christian Schröder in 1875. The town was named after a Korana Chief, Klaas Pofadder. Lured by a perennial spring, settlers sank their roots here from 1889 onwards.

The first plots surveyed were sold in 1917. Pofadder has several old buildings, one being the Roman Catholic Church. Built by the mission, it runs a block-making enterprise, a chicken farm and a dairy, giving employment to the poor. There are many day walks and the town is transformed into a floral wonderland each spring.

To see and do:

- Dutch Reformed & Catholic Churches – Well worth a visit for the mix of old and new architecture.
- Pofadder Hiking Trail

Port Nolloth

Established as a small-vessel harbour and railway junction in 1854 for the copper-mining industry, Port Nolloth's narrow, shallow entrance makes it unsuitable for ore carriers. Instead it became a centre for the small-scale diamond recovery and crayfishing industries and the only resort on the Diamond Coast.

Visitors can enjoy the beautiful sunsets, clean beaches and the occasional antics of seals as well as good line fishing and plentiful fresh crayfish. Fish and crayfish can also be bought from the factory in season. Nama culture can be seen at the Lekkersing settlement north of Port Nolloth.

To see and do:

- **McDougall's Bay** – A cluster of seaside cottages, houses and camping sites south of Port Nolloth makes this idyllic bay a popular boating, fishing and crayfishing spot.
- **Museum** – Once the Cape Copper Company's Officers' Club. Find out more about the history of the town and its people, the influence of copper and diamonds and the shipwrecks nearby. Tel +27(0)27 851 8865

Soebatsfontein

The name is derived from Hendrik Stievert, foreman on the farm of the widow Van der Westhuizen, who was captured by San Bushmen. His Khoi sheppard was hiding nearby and heard Hendrik begging for his life... in vain.

Springbok

The principal town of Namakwa, Springbok is set in a narrow valley bisecting the granite domes of the Klein Koperberge (small copper mountains). Shortened from Springbokfontein in 1911, the town owes its existence to copper-mining undertaken after 1850 and a ready supply of water.

To see and do:

- **Goegap Nature Reserve** – This reserve features examples of Namakwa's natural riches, supporting 600 indigenous flower species, 45 mammal and 94 bird species. The Hester Malan Wild Flower Garden showcases many Namakwa succulents and a rock garden. The reserve is open 08h00 -16h00. Tel +27(0)27 718 9906.
- **Namakwa 4x4 Route** – Starting at the picturesque Pella Mission Station, the Namakwa Route follows the Orange River 642km to the sea. Cross the Namakwa Brokenveld, False Succulent Karoo, Arid Karoo, Western Mountain Karoo, Succulent Karoo and Sandveld. There are two routes lasting between 2 and 9 days. Tel +27(0)27 712 8035/6

Flower season in Goegap Nature Reserve near Springbok





Along the N7 near Steinkopf

Steinkopf

The original Nama settlement was situated at Bijzondermeid, 5km south of present day Steinkopf. In 1818, a Rhenish mission station was established and in 1821 the mission was moved to current Steinkopf (then known as Kookfontein) due to a perennial spring that is still flowing today.

Reverend Brecher later renamed the town Steinkopf in honour of the German minister in London. Today Steinkopf serves a large communal stock farming area and many inhabitants work on the outlying mines in Namaqualand.

The quiver tree is found in abundance in this area. The original huts built by Namaqua inhabitants can still be viewed. These huts provide isolation against heat, rather than the occasional downpour.

To see and do:

- **Annenous Station and Nonahams** – Annenous was the historic steam train station for the transport of copper and Nonahams, the watering point where the original fountain and dam still exist. The Meel road, also known as the postal road, was built in the 1860s and meanders up the mountain from Annenous to Nonahams and continues to Steinkopf. Today the road is only accessible to 4x4s.
- **Kilfontein Graves** – Anglo-Boer War graves from the last skirmish between the British relieving forces and Boer Commandos.



The South African Astronomical Observatory outside Sutherland in winter

Sutherland

Established in 1858 and named after a prominent Worcester cleric, Reverend Henry Sutherland, the town lies on the Roggeveld Plateau 1 450m above sea level and is well-known for its brilliant night skies. The biting cold winters makes it the coldest place in SA.

The 'sterboom' (star tree) blossoms in September and can be found on many farms in the region. The town is said to produce the finest mutton in the country and is home to the world-renowned South African Astronomical Observatory.

To see and do:

- **Koornlandskloof** – 55km north towards Calvinia. Hiking and biking trail with ample lodging. Tel +27(0) 23 571 2723.
- **Salpeterkop** – The last active volcano south of the equator is to be found close to the observatory. It was active 66 million years ago.

Vioolsdrift

The official border post to Namibia offers several camp sites on the banks of the Orange River. Many river rafting trips along the Orange and through the Richtersveld start here. Stunning rock strata can be viewed.

Fun on the Orange River near Vioolsdrift - Umkulu Adventures



Williston

In 1768, Johan Abraham Nel planted an almond tree in honour of his son's birth. This tree eventually became enormous and provided an oasis in the dry treeless area of the Karee Mountains. In 1845, Johann Heinrich Lutz established a mission station named Amandelboom (almond tree) at this spot. In 1883, the name was changed to Williston in honour of Colonel Hampden Willis.

To see and do:

- **Corbelled Houses** – Regarded as the first architectural style in the north-west Karoo. These unique houses are built entirely of stone with flat stones protruding from domed roofs. Examples of these houses can be seen on the farm Arbeidersfontein in the direction of Carnavon and along the Fraserburg road at Jan Klaas and Van Reenens' farms.
- **Singing Hills** – East of Williston stand two hills, each shaped like a sugar loaf. A footpath leads to the top, known in the nineteenth century as 'Sangkoppe' but later as 'Singkoppe' (Singing Hills). From the hills, choirs would sing spiritual songs that echoed across the plains.

Corbelled Houses near Williston



Port Indigo

Self-catering Guest House

Peaceful tranquillity - situated between the Atlantic Ocean and Namaqualand. Our beachfront, upmarket country-style establishment offers self-catering and B&B.
All units fully equipped • AA Awards Finalist



Port Indigo Guest House • 1245 Kamp Street
Mc Dougalls Bay • Port Nolloth
Tel: +27(0) 27 851 8012 • Cell: +27(0) 82 892 6344 • +27 (0) 27 851 7595
www.portindigo.co.za • portindigo@telkomsa.net



NAMAKWA TOURISM

Voortrekker Street, Springbok
PO Box 5, Springbok 8240

Tel: 27 27 712 8035/6 Fax: +27 27 712 1421

Email: tourism@namakwa-dm.gov.za
www.namakwa-dm.gov.za





NATIONAL PARKS IN THE NORTHERN CAPE

Augrabies Falls National Park

Few sights or sounds are as awesome as the gushes of water thundering down the 56m Augrabies Waterfall when the Orange River is in full flood. The Khoi people called it 'Aukoerebis' (place of Great Noise) as this powerful flow of water is unleashed from rocky surroundings characterised by the 18km abyss of the Orange River Gorge.

Picturesque names such as Moon Rock, Ararat and Echo Corner are descriptive of this rocky region. Klipspringer and kokerboom (quiver trees) stand in stark silhouette against the African sky, silent sentinels in a strangely unique environment. The 55 383 hectares on both the northern and southern sides of the Orange River provide sanctuary to a diversity of species, from the very smallest succulents, birds and reptiles to springbok, gemsbok and giraffe.

It has a large camp sleeping 135 visitors. All chalets are fully equipped, self-catering, air conditioned with shady camp sites and swimming pools, conference facility and a restaurant.

Info: www.sanparks.org
SAN Parks Central Reservations: +27 (0) 12 428 9111
Augrabies National Park direct: +27 (0) 54 452 9200

*Left bottom:
The Orange River Gorge in the Augrabies National Park
Right bottom: A Black Desert Rhino with a calf*



Mokala National Park

The newest South African National Park, just south of Kimberley, was proclaimed on 19 June 2007. "Mokala" is a Setswana word for the camel thorn tree, which is prevalent throughout the park.

Mokala National Park is one of the most easily accessible of the national parks in the Northern Cape being only 80km southwest of Kimberley. The park is tucked between the hills and the landscape varies between koppieveld (hills) and large open plains. The isolated dolerite hills give the place a calming feeling of seclusion and offer a lovely contrast to the large open sandy plains towards the north and west of the Park. Drainage lines from the hills form little tributaries that run into the plains and drain into the Riet River.

The Park is currently 26 500ha in size and the following species occur in the park: Black Rhino, White Rhino, disease-free Buffalo, Tsessebe, Roan Antelope, Mountain Reedbuck, Giraffe, Gemsbok, Eland, Zebra, Red Hartebees, Blue Wildebeest, Black Wildebeest, Kudu, Ostrich, Steenbok, Duiker and Springbok.

Facilities offered include self-catering accommodation, restaurant, swimming pool, conference venue, camping and guided game drives.

Info: www.sanparks.org
SAN Parks Central Reservations: +27 (0) 12 428 9111
Mokala National Park direct: +27 (0) 53 204 0158





NATIONAL PARKS IN THE NORTHERN CAPE

Kgalagadi Transfrontier Park

One of the world's last truly unspoilt ecosystems, Kgalagadi is the result of the unification of South Africa's Kalahari Gemsbok Park and Botswana's Gemsbok National Park. At 3.7-million hectares, the park is one of the largest conservation areas in the world.

Red sand dunes with sparse vegetation and the dry riverbeds of the Nossob and Auob with its thorn trees, raisin bush and shepherd trees extend across the national boundaries. The park gives sanctuary to herds of endemic antelope such as gemsbok (oryx), springbok, blue wildebeest, red hartebees and eland. Kgalagadi is also home to the famed black-maned Kalahari lion, leopard, cheetah and smaller game such as mongoose, porcupine and honey badger. 58 mammal, 55 reptile, countless insect and a host of plant species share the desert and dry savannah with approximately 300 species of bird, including at least 20 species of large raptors.

The park has three traditional rest camps, Twee Rivieren, Nossob and Mata-Mata with a variety of accommodation options and activities. Six new, upmarket and unfenced wilderness camps allow visitors to feel at one with the Kalahari. Kalahari Tented Camp has 15 fully equipped, self-catering units and a swimming pool and a waterhole in the ancient Auob River. The small and exclusive Grootkolk is only 20km from Unions End and the prime predator area of the park.



Kielie Krankie has stunning views over the sand dunes. Four two-bed units overlook a waterhole. Urikaruuus, on the banks of the Auob River, is a lofted camp with four two-bed units that also overlooks a waterhole. Bitterpan and Gharagab are only accessible by 4x4.

A passport is not needed to enjoy the Botswana side as long as entry and exit is made through the same gate. Camping in Botswana is available at Polentswa, Rooiputs and Two Rivers. There are two 4x4 routes, namely Wildernis and Nossob Mabuasehube. For reservations to camp on the Botswana side of the Park and to book the wilderness trail, contact the Botswana Office. The border post to Namibia is now open, but all visitors using the park's entry point must sleep in the park for at least two nights.

Info: www.sanparks.org

SAN Parks Central Reservations: +27 (0) 12 428 9111

Kgalagadi Transfrontier Park direct: +27 (0) 54 561 2000

Botswana Parks and Reserves Reservation Office:

+267 (0) 580774

Left: Jackal Buzzard

Below: the famous black-maned Kalahari lion





NATIONAL PARKS IN THE NORTHERN CAPE

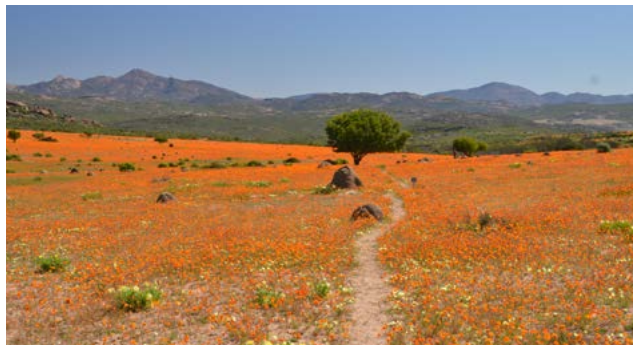
Namakwa National Park

Situated in the heart of the succulent Karoo, the park has grown enormously and stretches from the well-known Skilpad section near Kamieskroon on the escarpment, westwards to the coast. The recently added 'Groen-Spoeg' coastal section is the only significant remaining untouched section of the Namaqualand coast.

With its winter rainfall, Namaqualand is home to the richest bulb flora of any arid region in the world. More than 1 000 of its estimated 3 500 plant species are found nowhere else on earth! Amphibians and reptiles are also well represented, with a number of endemic species. The mammals that have adapted to these harsh conditions include: gemsbok, springbok, red hartebees, klipspringer, aardvark, baboon, steenbok, duiker, porcupine, black-backed jackal and leopard. Many bird species are also found in the dry arid western regions of the country.

The Park is still in a development phase, but has a lot to offer its visitors. The 5km Skilpad circular road is still the most popular part of the park, especially during the springtime flower season.

Besides the famous spring flowers, the park is home to 134 different vegetation types, many small fauna species, amazing birdlife and a fascinating collection of reptiles. Mountain biking is a great way to explore region. In addition, there are two 2-hour walking trails, a picnic area with ablution facilities and a shop and kiosk. The rest of the Park is accessible to 4x4 vehicles through 220km of roads that includes roads to an unspoilt coastline and a beautiful 25km scenic route to Soebatsfontein.



Accommodation

Skilpad - Rest camp

All four chalets are perched on an escarpment and have uninterrupted views of the coastline in the distance. All units have separate bedrooms, open-plan kitchen and verandas with dining areas as well as indoor and outside braai facilities. The neighbouring farm has a tearoom, which provides light snacks. Activities include walking trails, mountain biking and a 4x4 trail.

Luiperdskloof - Cottage

Luiperdskloof lies in a secluded valley in the Kamiesberg section of the Park, beneath a pair of imposing granite domes. The area is dotted with fountains, some with shady glades - perfect for picnics or just some quiet time. It can only be reached by 4x4. The cottage can accommodate 6 people in two bedrooms with gas heating, cooking facilities and paraffin lighting.

Namakwa Coastal - Camping

The pristine coastline from the Groen River mouth to the Spoeg River mouth is a recent and valuable addition to Namaqua Park and currently still under development. More formal camp sites and ablution facilities will be established, but seven rustic camping sites are available along the coastline at the moment.

Info: www.sanparks.org

SAN Parks Central Reservations: +27 (0) 12 428 9111

Namaqua National Park direct: +27 (0) 27 672 1948





NATIONAL PARKS IN THE NORTHERN CAPE

|Ai-|Ais/Richtersveld Transfrontier Park

In 2003 an international treaty was signed between South Africa and Namibia to form the |Ai-|Ais/Richtersveld Transfrontier Park. This has opened the way for future border crossings at Sendelingsdrift border post. Visitors are advised to call the park to confirm operation hours.

The rugged Richtersveld side of the park is the driest region of the Northern Cape and yet still nurtures approximately 30% of all South Africa's succulent plant species. Paradoxically beautiful, it is a land for those keen to 'rough it'. Explore the park from the comfort of a 4x4 vehicle or paddle the river to observe the awe-inspiring purity of an unspoilt wilderness.

The opening of the Transfrontier Park has led to the development of more accommodation camps on the South African side. All five camping sites have full ablation facilities. There are two wilderness camps, Tatasberg and Gannakourieb, which are fully equipped self-catering camps and Sendelingsdrift sports 10 new self-catering units. The four surrounding Richtersveld community towns also offer unique accommodation establishments. Entrance and overnight permits can be obtained at Sendelingsdrift.

Info: www.sanparks.org

SAN Parks Central Reservations: +27 (0) 12 428 9111

|Ai-|Ais/Richtersveld Transfrontier Park : +27 (0) 27 831 1506



Tankwa Karoo National Park

Situated on the southern boundary of the Northern Cape with the Roggeveld escarpment in the east, the Cederberg mountains in the west and the Klein Roggeveld mountains in the south, a mere four-hour drive from Cape Town transports visitors into the heart of this truly spectacular national park.

Situated within the Succulent Karoo Biome, Tankwa Karoo National Park offers a unique experience, mind-blowing landscapes, - from the sheer cliffs of the Roggeveld escarpment to the moonscapes of the Tankwa Desert. Tankwa Karoo National Park came into being in 1986 with the conversion of approximately 27 000ha of state owned land into a national park. Since 1996, additional land has been bought and the current size of the Tankwa Karoo National Park is approximately 131 000 hectares.

Tankwa Karoo National Park has a multitude of small mammal species including: duiker, steenbok, porcupine and black-backed jackal. Leopards also naturally roam the area and endemic large game species such as the Cape mountain zebra, red hartebeest, gemsbok and springbok have also been reintroduced to join the existing kudu herds. Accommodation is available at the picturesque rest camp and an old restored farmhouse.

Info: www.sanparks.org

SAN Parks Central Reservations: +27 (0) 12 428 9111

Tankwa Karoo National Park direct: +27 (0) 27 341 1927

Arid National Parks

of the Northern Cape



KGALAGADI TRANSFRONTIER PARK



|AI-|AIS/RICHTERSVELD TRANSFRONTIER PARK



AUGRABIES FALLS NATIONAL PARK



MOKALA NATIONAL PARK



NAMAQUA NATIONAL PARK



TANKWA KAROO NATIONAL PARK

Kgalagadi Transfrontier Park tel +27 (0)54 561-2000

|Ai-|Ais/Richtersveld Transfrontier Park tel +27 (0)27 831-1506

Augrabies Falls National Park tel +27 (0)54 452-9200

Mokala National Park tel +27 (0)53 204-0158

Namaqua National Park tel +27 (0)27 672-1948

Tankwa Karoo National Park tel +27 (0)27 341-1927

SANParks Central Reservations

tel +27 (0)12 428-9111

web www.sanparks.org

email reservations@sanparks.org



South African
NATIONAL PARKS



PROVINCIAL NATURE RESERVES OF THE NORTHERN CAPE

The Northern Cape has a prolific number of national parks, private game reserves and provincial nature reserves. In this addition we are exploring the six provincial nature reserves.

The **Akkerendam Nature Reserve** is situated just outside of Calvinia. The reserve is 2750 hectares in size with the majestic Hantam Mountain a main feature. A wide variety of flora and fauna is found here, including sword lilies, Cape asters, and brown peppering plants. For bird lovers, this reserve is also a proclaimed bird sanctuary with more than 65 bird species, such as the fairy flycatcher, the black-headed canary, and layard's tit-babbler offering popular sightings. There are two hikes across the Hantam Mountain, one being relatively easier than the other. Visitors can expect to spot the endangered sterkbom as well as the magnificent star tree which is unique to the region. Also enjoy a picnic and relax within the stunning scenery. *Contact: +27 (0) 27 341 1043*

Doornkloof Nature Reserve is unique not only in the sense that there are minimal signs of disturbance, but it also has breathtaking views of the Vanderkloof dam and mountainous areas. It is a reserve rich in history as remnants of the Anglo Boer war and historical rock engravings can be seen on the reserve with prior arrangement. The reserve has recently undergone a facelift with new self-catering accommodation facilities (guest house & chalets), camping sites and picnic areas being build.

Doornkloof Nature Reserve is approximately 45km North-west of Colesberg around the confluence of the Zeekoei and Orange Rivers. The Zeekoei River is the largest tributary that enters the Vanderkloof Dam. The Zeekoei river being the largest tributary that enters the Vanderkloof Dam. The landscape is very mountainous with abundant kloof and little true plains.

48 Mammal species have been documented, 28 reptile and 172 bird species. Activities include Cycling, Hiking, Canoeing, Angling, Birdwatching, Game Viewing and Day visits. *Contact: +27 51 753 3006/5 Email: doornkloofnr@gmail.com*



Goegap Nature Reserve

Goegap Nature Reserve lies about 70 km north of Kamieskroon and 15 km southeast of Springbok. "Goegap" derives its name from the Nama word for waterhole and there are plenty supporting the bird and animal residents. Twitchers will be kept busy with spotting all 94 recorded bird species. Home to 45 mammalian species, you will have a chance of spotting gemsbok, springbok, Hartman's Zebra, bat eared foxes and aardwolf amongst the incredible number of floral species. *Contact: +27 (0) 27 718 9906*

Oorlogskloof Nature Reserve is situated 16km outside Nieuwoudtville and about 50km from Vanrhynsdorp in the Northern Cape Province. The reserve comprises of 4776 hectares of mountains which have been dissected by deep river gorges through which the Oorlogskloof River flows. The area has a rich and varied plant life being situated on the transition/ecotone area of the Fynbos and Karoo Biomes. There are two major hiking trails and two day walks in the reserve. *Contact: +27 (0) 27 218 1010*

PROVINCIAL NATURE RESERVES OF THE NORTHERN CAPE



Below: Oorlogskloof Nature Reserve

Right: Witsand Nature Reserve

Rolfontein Nature Reserve is situated in the vanderkloof town, and 16 km north of Petrusville. The reserve offers a picnic spot at designated sites, with visitors providing their own charcoal. The tent camp offers accommodation for an organized group of a maximum of 40 people, or for individuals, also visitors must bring their own camping Equipment. An outside lapa can also be hired separately for functions and group camping. The nearest local attraction is the Dam wall, which is 108m high and has a span of 756m. The Dam is rich in fish species,

such as the small-mouth and large-mouth yellow fish, catfish and carp. Angling is permitted in designated areas at the dam and a valid license is required, which is obtainable from any post office. Boats of all types are permitted on the dam, but may not approach the Reserve Bird Sanctuary and must maintain a distance of at least 50m from the shoreline.

TEL: +27 (0) 53 664 0900 E-mail: rolfonteinbookings@gmail.com

Witsand Nature Reserve, flowing white dunes, twenty to sixty meters high, are surrounded by copper-red Kalahari sand, Acacia woodland and the Langberg Mountain range. Home of the famous 'Brulsand' or Roaring Sands of the Kalahari, these dunes emit a strange roaring sound when disturbed (by wind, man or animal). Animals in the Witsand Reserve include springbok, gemsbok, steenbok, duiker, red hartebeest, ground squirrels, meerkat, porcupine, aardwolf, aardvark, pangolin, bat-eared fox, cape fox and spring hare. Excellent accommodation available either in the luxury chalets, caravanning and camping or at the group accommodation. Contact: +27 (0) 83 234 7573





Experience the Northern Cape

Things to explore... from A-Z

4X4 Trails

Take rugged mountains, endless flatlands and undulating dunes. Add to this diverse scenery, stunning plant life and plentiful game and you have a recipe that will please all 4x4 eco-adventurers. But what really separates the trails of the Northern Cape from the rest is the seemingly infinite open spaces, mostly devoid of people.

Nossob 4x4 Route (Kgalagadi Transfrontier Park)	+27 (0) 54 561 2000
Witsand	+27 (0) 83 234 7573
Namakwa 4x4 Trail	+27 (0) 27 718 2986
Richtersveld Route (Ai- Ais/Richtersveld Transfrontier Park)	+27 (0) 27 831 1506
Augrabies National Park	+27 (0) 54 452 9200
Banksgate Trail	+27 (0) 27 712 8035
Kalahari Trail	+27 (0) 54 511 0900
Diamond Coast Trail	+27 (0) 27 807 2999
Cobussegat Trail	+27 (0) 83 303 5263
Toekoms Trail	27 (0) 27 341 2201

For further information on 4x4 trails visit www.experiencenortherncape.com

Experience the Northern Cape

Adventure Motorcycling

The Northern Cape is also an ideal destination adventure motorcycling. The concept offers riders scenery, history and challenges in a non-competitive, on-road/off-road riding experience. All of the regions in the province have extensive dirt-roads of varying condition. Add to this plenty of sunshine, little rain and numerous old mines, quarries and open space and the Northern Cape presents the ideal terrain for adventure motorcycle touring.

Astronomy

The Southern African Large Telescope (SALT) is the largest single optical telescope in the southern hemisphere. It is able to record distant stars, galaxies and quasars a billion times too faint to be seen with the unaided eye - as faint as a candle flame at the distance of the moon.

SA Astronomical Observatory (Sutherland, Namakwa region)
+27 (0) 23 571 2436, Booking essential

Namakwa Flower Season

As part of the Succulent Karoo, Namakwa is a biodiversity hotspot and as such is the only arid hotspot in the world. It contains more than 6 000 plant species, 250 species of birds, 78 species of mammals, 132 species of reptiles and amphibians



Things to explore... from A-Z

and an unknown number of insects, making it the world's most diverse, arid environment. More than 40% of these species are found nowhere else on Earth.

The world's largest forests of quiver trees or kokerbome (*Aloe dichotoma*) are located outside Loeriesfontein, Kenhardt and Onseepkans. Owing its name to the San, who used the trunk, branches and its bark to make quivers, the aloe grows to four metres, stores water in its trunk, resists drought and lives for up to 400 years. The sterboom or star-tree (*Cliffortia arborea*) grows nowhere else, but the southern sides of high ridges of the Nuweveld Mountain where it finds shelter from the blazing sun. The parks and nature reserves are amongst the best places to view this floral wonderland.

The 103 000 ha Namaqua National Park, 22km north-west of Kamieskroon, is open to the public throughout the year, but a conservation fee is charged during flower season. An upgraded circular drive offers visitors a diverse floral display. Tel +27 (0) 27 6721948

15km southeast of Springbok is Goegap Nature Reserve, 15 000ha of typically rocky granitic, rocky hills and sandy flats. It supports 600 indigenous flower species, 45 mammal species and 94 bird species.

The Hester Malan Wild Flower Garden showcases a spectacular number of indigenous succulents. Limited accommodation is available. +27 (0) 27 718 9906

Fly-fishing

The lower Vaal River and Riet River near Kimberley as well as the Orange River in the Richtersveld are renowned destinations for stable fly-fishing populations yielding world-class catches of largemouth and smallmouth yellow fish in pristine surrounds.

With rugged scenery, abundant wildlife and real freedom, the waters of the Northern Cape waters promises a memorable fly-fishing experience.

Experience the Northern Cape

Game Capture Safaris

"Game capture safaris at Mattanu Private Game Reserve is an experience with no equal. Working with one of the most experienced wildlife veterinarians in South Africa, Dr JC Kriek, was and will always be a privilege noted in my bucket list.

Early morning start we get a bush lecture on the safety measures, animal behaviour and the dangers associated with the tranquilising medicine. Pilot Johan Kriek Junior then goes through the dangers of flying low level and low speed for darting the antelope from the helicopter as we will join to see the dart being fired onto the antelopes buttocks area.



Things to explore... from A-Z

We then get onto the vehicle with the ground team. After the call comes in from the helicopter that the animal has been darted we accelerate with the game viewing vehicle towards where the helicopter is circling the buffalo about to go down.

Once the animal is down, taken control over by the labour and all other non-tranquilised buffalo chased into the distance with the helicopter we are allowed of the vehicle and then the photos, posing and petting starts. What an amazing experience to be this close, touch, feel and smell one of Africa's Big Five! I am asked if I would like to vaccinate the beast and I go ahead very amazed at just how immobilised this animal is lying there allowing me to stick a needle under the skin and vaccinate. Another member from our group is asked to feel if the Buffalo cow is pregnant. Dr Kriek shows her exactly how and she confirms the pregnancy of the cow. After all vaccinations, measurements and identification is complete I reverse the tranquiliser and within 5 minutes she is completely awake and well. Amazed at the little amount of stress this beautiful animal is under I struggle to compose myself for the next animals being the very rare Roan and Sable antelope."

Golf

Kimberley Golf Course, Kimberley
+27 (0) 53 723 1501

Magersfontein Golf Course
+27 (0) 53 581-9000/9026

Sishen Golf Course, Kathu
+27 (0)53 723-3288

Upington Golf Course, Upington
+27 (0)54 338-0239

Experience the Northern Cape



Hiking

The Northern Cape boasts numerous fantastic hiking trails in and around its magnificent areas. It also boasts numerous game reserves that offer fantastic hiking trails.

Augrabies

The Augrabies Falls National Park is home to a 56m waterfall that thunders down when the Orange River is in full flood. The park offers the Klipspringer 3-day hiking trail as well as day walks. This hike offers incredible views of the shimmering falls and the river gorge. Despite the scarceness of the vegetation, some beautiful examples of flora are to be found along the route.

Richtersveld

The Richtersveld area is botanically one of the most interesting areas and boasts hundreds of species of flowering succulents. Its jagged mountain peaks, wind-sculpted boulders and colourful indigenous flora have a unique beauty. Explore the hidden wonders and go hiking through this beautiful area.

Nieuwoudtville

The Oorlogskloof Nature Reserve, situated 16km outside Nieuwoudtville in the Northern Cape, comprises of 4776 hectares of mountains dissected by the deep river gorges of the Oorlogskloof River. This magnificent nature reserve offers 2 hiking trails as well as two day walks. The Rock Pigeon Trail takes 4-5 days

Things to explore... from A-Z

and includes views of the glistening river, magnificent protea stands, numerous beautiful bird species, interesting rock formations and mysterious rock paintings. The Rameron Pigeon Hiking trail covers the same terrain and is 2 days longer. The Leopard Trap day hike is 15km, while the Rietvlei day hike is 18km long.

Namakwaland

The picturesque Namakwaland region offers the Kodaspiek, Lelieshoek-Oemsberg and Vensterville hiking trails amongst others. All hikes offer magnificent views of game and vary in length. In spring, hikers have the awesome opportunity to experience the magnificent Namaqualand flowers.

Kenhardt

The Quiver Tree Forest and Hiking Trail is located about 8km south of Kenhardt on the main route to Cape Town. The forest comprises of 4 000-5 000 quiver trees and the trail meanders through the awesome looking forest.

Houseboat Cruises – Vaal River

DaRiva Houseboat is an idyllic rest stop with comfortable accommodation. The spacious top deck has barbeque facilities and a skipper at your service, while exploring the 50km of fishing waters and diverse bird life. Avid birders can spot even spot the Vaal River's own Big Five - the Otter, African Fish Eagle, Giant Kingfisher, Goliath Heron and Water Monitor Lizard.

DaRiva offers sunset and day cruises as well as overnight and weekend cruises with full accommodation. +27 (0)82 332-2266

Mission Stations

The early missionaries who travelled to the interior became adventurers in their own right. These believers did much to 'open up' this thirsty land. With the aid of enthusiastic work parties, they built homes, churches and schools. Today, there are still a number of mission stations operating in Namaqua. Settlements such as Pella, with its cathedral surrounded by date palms, Leliefontein, Komaggas, Matjieskloof, Concordia and Steinkopf

Experience the Northern Cape

still thrive. The mission stations are not restricted to Namaqualand with the Moffat Mission Station in Kuruman being one of the most visited and historically significant in the Northern Cape.

Museums

Barkly Bridge and Barkly West Museum

Barkly West, Karoo Region

Located on the north bank of the Vaal River, this steel-girded bridge was brought upcountry by rail and ox wagon and was the first to ford the Vaal River in 1885. The tollhouse was restored in 2000 as a museum with displays on local geology, archaeology and history.

Calvinia Museum

Calvinia, Namaqua Region; +27 (0) 27 341 8500

The Calvinia Museum in Church Street is housed in the old synagogue. The museum aptly illustrates the history of sheep farming in South Africa. Utensils, clothing, porcelain, brass and other items relating to the lifestyle of the early European settlers are exhibited.

Colesberg-Kemper Museum

Colesberg, Karoo region; Telephone: +27 (0) 51 753-0678

Colesberg has several national monuments, including the Colesberg-Kemper Museum. A fine example of 19th century Karoo architecture, it originally was the Colesberg Bank before becoming the Standard Bank. The Colesberg-Kemper Museum now houses fascinating relics of the town's rich tapestry of history. Walking tours of the town are a speciality of the museum. The museum also organises tours of farms and the district.

Kimberley Mine Museum and Big Hole

Kimberly, Diamond Fields Region

+27 (0) 53 830 4417 or +27 (0) 53 839 4604

One of Kimberley's major attractions, the Big Hole and Kimberley Mine Museum, was once a flat-topped hill and is now an awesome hole - the largest hand-dug excavation in the

Things to explore... from A-Z

world. It is 215 metres deep with a surface area of some 17 hectares and a perimeter of 1,6 km.

The Kimberley Mine site was started in July 1871 and by 14 August 1914 all mining activities ceased. By that time it had yielded 2 722 kilograms of diamonds extracted from 22,5 million tons of excavated earth. Today the Big Hole is surrounded by original old buildings from bygone, relocated from their earlier sites to form a magnificent open air museum.

The Big Hole complex consists of the following:

- The Underground Mine Experience enables visitors to enter a recreation of a mine shaft of the period to experience the perilous 19th century mining conditions.
- A fascinating fifteen-minute film introduces visitors to the story of diamonds in Kimberley.
- Inside the Exhibition Centre are photographs, archive material and original artefacts that illustrate tells the tale of diamonds from the past to the present.
- Visitors can see the old jiggging machines and grease tables specially designed to extract the diamonds from the ore in the Pulsator Building.
- The Real Diamond Display, which is housed in a vault, displays the largest uncut octahedron in the world - the famous 616, named for its size.
- The new Viewing Platform offers visitors the opportunity to see The Big Hole from above and gaining a sense of its remarkable scale and grandeur.



Experience the Northern Cape

• In the Old Town, visitors can explore buildings that have been preserved or restored to their original glory. These include Barney Barnato's Boxing Academy, the Diggers' Tavern, authentic diggers' sleeping quarters and the De Beers Director's railway coach.

Richmond Horse Museum

Richmond, Karoo region; +27 (0)53 693 0176

Housed in what was a school and boarding house in the 1800s and more recently a cabinet maker's workshop and residence, is the very unique Horse Museum of Richmond. It is only one of two such museums in the world dedicated to the saddle horse.

Belgravia Historic Walk

Kimberley, Diamond Fields region

The historic suburb of Belgravia plays host to 33 of Kimberley's most historical sites. Much of the Kimberley's opulent lifestyle and its characteristic architecture can be seen during this interesting two kilometre circular walk. There are 33 places of interest, including museums, houses, buildings and statues.

Paragliding

Thermals soar from the baking earth to the cooler cobalt skies supplying an ideal lift for paragliders. Many world records have been set in De Aar and Kuruman, where flights of up to 350km have been recorded. The Fly De Aar aerodrome site launches predominantly by winch.

River Rafting and Canoeing Tours

The Northern Cape's Orange and Vaal Rivers are ideal for canoeing and rafting with the 2 340km long Orange River being a favourite for white water adventurers. The rivers of long stretches of warm, open flat water punctuated by rapids and divulge the breath-taking, arid Richtersveld scenery under the guidance of experienced guides for an incomparable 3 - 5 day adventure. A Great overnight experience with a starlit African sky, raging campfires, good food and great company.

Things to explore... from A-Z



Adrenaline rushing river rafting is presented by various river tour operators such as:

Wildthing	+27 (0) 87 354 0578
Bushwhacked	+27 (0) 27 761 8953
Kalahari River & Safaris	+27 (0) 084 244 4408
Umkhulu	+27 (0) 21 853 7952

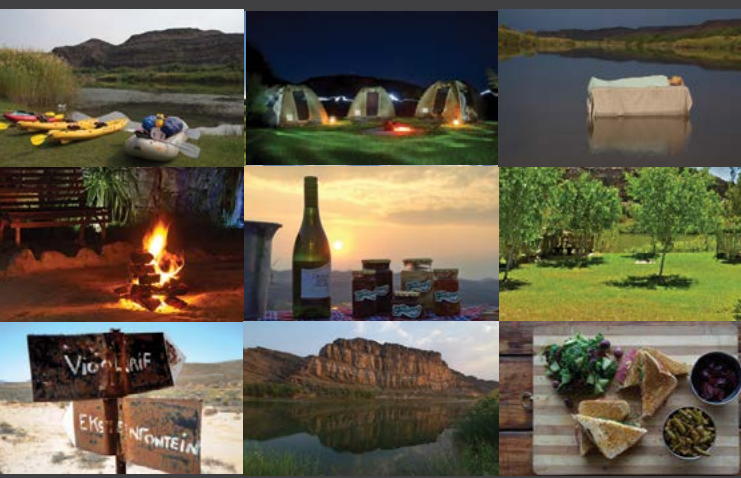
Rock Art

Examples of engravings left by the Khoisan people can be found all over the Karoo region. Most of the images are found on low ridges of dolerite rock as the black boulder fields are ideal for engraving. Rock gongs (rocks that reverberating beautifully) can also be found at a few sites such as Keurfontein near Vosburg and Thomas' Farm near Hopetown.

★ 1000 STAR ACCOMMODATION



Eco - Camp : re cycle, re use, organic



FOR YOUR QUALITY GOODS AND SERVICES
ORANGE RIVER CAMP
THE RICHTERSVELD
www.thegrowcery.co.za
info@thegrowcery.co.za

Experience the Northern Cape

Wine Tours and Tasting

Wine Tour at Orange River Wine Cellars
Upington, Green Kalahari; +27 (0)54 337-8800

The co-operative consists of five wineries situated in Upington, Kakamas, Keimoes, Grootdrink and Groblershoop. Grape juice cellars operate from Kanoneiland, Kakamas and Grootdrink. The wine grapes of the Oranjerivier Wine Cellars are harvested from 794 producers along the Orange River, which stretch over more than 300km from Groblershoop to Blouputs. The cellars offer an extensive range of award-winning wines from dry white, natural sweet and dry red as well as dessert wines.

The Orange River Wine Cellar in Upington



ESTABLISHED ROUTES

Battlefield Route

The war between Great Britain and the Boer Republics of Transvaal and the Orange Free State broke out on 11 October 1899 and residents of the Northern Cape region of the Cape Colony were plunged into three years of unimaginable hardship.

The Northern Cape played a decisive role in the war with major battles of the Western Campaign taking place within 120 kilometres of Kimberley. Within hours of the war's beginning, Boer commandos moved into Natal and the Cape Colony on three fronts. With former Cape Premier Cecil Rhodes ensconced in Kimberley, the town was a prime target for the Boers and the siege of Kimberley, then under the command of Lieutenant-Colonel Robert Kekewich, took place on 14 October.

The details of the siege, including the victories and setbacks suffered by the Relief Column under Lieutenant-General Lord Methuen, can be relived at the Magersfontein and McGregor Museums. The battles from Orange River Station, including Modder River, Magersfontein, Belmont, Graspan and the eventual relief by General French and his cavalry are poignantly represented.

The decisive victory by the Boers over the Highland Brigade at Magersfontein on 11 December 1899 was a crushing blow to the British army and to the besieged folk of Kimberley, who had expected relief before Christmas. They had to endure many more days of deprivation and danger, including shelling from a Boer Long Tom, before relief eventually came on 15 February 1900.

This did not mean the end of the war, but only the end of the conventional stages and, until May 1902, Boer guerrilla forces roamed the entire Northern Cape region with skirmishes between Boer and Brit being regular occurrences. By visiting the many battlefields and talking to the local residents, visitors can picture that distant war and bring it to life.

Orange River Station

Located just east of Hopetown, Orange River Station formed the starting point of the British advance. While Methuen gathered his relief column around the station, his troops built forts and lookout posts along the hills. On 21 November 1899 Methuen

Battlefield Route (continue)

was ready and, ordered to break through the Boer lines, he struck out of Kimberley. Meanwhile at Belmont, the Boers prepared to block his advance. Later on during the war, both Boer and African civilians were interned at a concentration camp located behind some present day silos. A graveyard, monument and well-dug for drinking water by the Boer women- are sad reminders on the site.

Belmont

On 23 November 1899, an Orange Free State Commando and the Kimberley Relief column fought their first action at Belmont. Methuen's troop camped at Thomas' Farm before attacking at dawn, but confused troop deployments and alert Boers, cost the British dearly. After pouring a hail of bullets into their attackers, the Boers mounted their ponies and galloped away. British losses were 75 killed and 220 wounded. The Boers lost some 15 dead, 30 wounded and 36 men taken prisoner. Two monuments located on the battlefield honour those men who died here, while various site displays provide visitor information.

Ganspan

Retiring from Belmont, the Boers joined General De la Rey's burghers and occupied some hills located between the Ganspan and Enslin sidings. On 24 November 1899 after a brief skirmish, Methuen marched his troops up from Belmont and camped within striking distance of Ganspan. His artillery shelled the Boers, but failed to chase them from their positions. Adjacent to the N12 on a low kopje, a memorial lists those British troops killed in the area and display provides site information. Boer losses are recorded on a monument located on the highly visible Eastern kopje.

Modder River

Also known as Twee Rivieren, action saw the Boers fight from concealed entrenchments dug along the north and south banks of the Riet and Modder River. The Boers constructed a riverfront defence line and, supported with artillery and machine guns, they prepared a trap for Methuen's troops. For the British, Modder River proved costly - they lost 70 and 413 troops were wounded. Two battlefield monuments located a short distance after the Jacobsdal and Schutskamma Road turnoffs list some of those British troops killed in action. A stone blockhouse constructed in 1901 still guards the rail bridge and two memorials located nearby record those British troops, who later died at the Modder

ESTABLISHED ROUTES

River camp. For the visitor, various displays are located at key points on the Battlefield.

Magersfontein

After their Modder River battle, the Boers anchored a new defence line around the Magersfontein hills. On 10 December 1899 the British bombarded the hillside and warned the Boers of an impending attack. A hilltop memorial on the erstwhile battlefields commemorates the Scottish dead, while the Royal Highlanders (Black Watch) monument honours Major General Andy Wauchope, the Brigade's Commanding Officer, who was killed during the battle. Nearby are twin monuments to a Scandinavian detachment fighting alongside the Boers with other gravesites, memorials and information points being accessible on the battlefield.

Langberg

After the Modder River battle, the Boers first occupied the Spytfontein hills before extending the line to include Magersfontein into their defences. Located on a small hill next to the N12, an information panel provides some site information and for the more adventurous, a Boer field gun and pom-pom position are worth exploring.

Koedoesberg Drift

To divert Boer attention away from the eastern British troop build-up, the highland Brigade (now under General MacDonald)

Below: An old canon on a top of the hill near Magersfontein
Right: The war memorial at Magersfontein



Battlefield Route (continue)



marched downstream along the Riet River to Koedoesberg Drift. General Christiaan de Wet's Boers occupied Koedoesberg Hill and between 5-8 February 1900 fighting broke out along the summit. Although both sides only suffered slight casualties during the action Lt Freddie Tait, a champion British golfer, was killed on the hill. Returning to Modder River, the Highlanders joined those troops massing to the east and for them it was mission accomplished. Their attention distracted, the Boers were caught offside and breaking through their eastern defences, General French's cavalry relieved Kimberley.

Carter's Hill

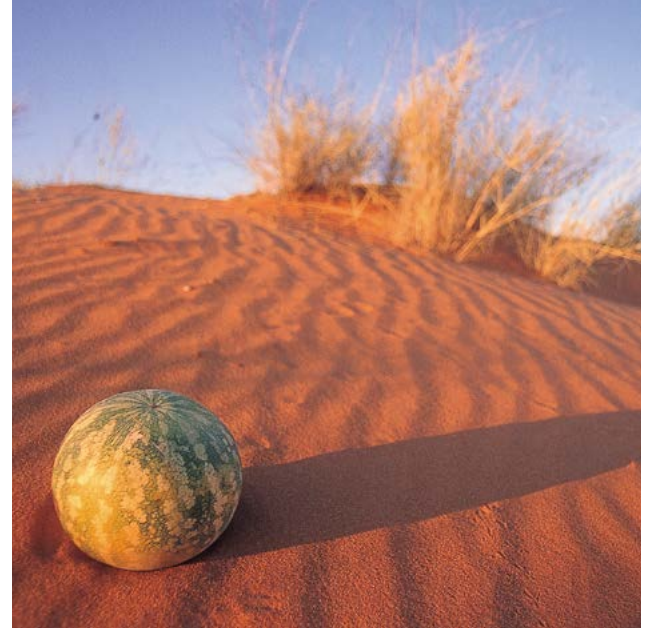
Intended to divert Boer attention from Methuen's approaching relief column, this disastrous action, fought on 28 November 1899, resulted in heavy loss for the Kimberley garrison. Launching a three-pronged attack, they captured Carter's farm and a Boer laager, but the mounted troops failed to seize the Boer guns. During the battle Lt Colonel Scott-Turner, a Black Watch officer, was killed along with a number of local men. A monument marks the spot where they fell.

ESTABLISHED ROUTES

Namaqua Coastal Route

This route runs along the coast from “Groenrivier” mouth until Port Nolloth and is ideal if one is looking for peace, tranquillity and adventure. However many of the roads on the route are not accessible to ordinary saloon cars and more suitable for 4x4. If coming from the south (Cape Town) the route starts in Namaqua National Park. Breath-taking scenes of the Atlantic Ocean with sightings of dolphins and whales combined with great vistas of mountains and veld with endemic wildlife makes travelling in this area remarkable. Each one of the towns along the route offers warm hospitality, great local cuisine and stories whilst exploring shipwrecks or going on a walk or hike.

Contact +27 27 672 1752
Email: coast.of.diamonds@gmail.com



Kalahari Red Dune Route

The route extends north of Upington into the toe-shaped protrusion of South Africa to the Namibian border. It showcases the Kalahari through a wide range of experiences including dune boarding, camel riding and 4x4 trailing for the adventurous, game drives, guided walks, birding expeditions and other eco-inclined activities for nature-lovers. For visitors attuned to culture and history, the Kalahari Red Dune Route offers the opportunity to experience regional customs and folklore of the Khomani San, sample traditional cuisine, and meet the warm and welcoming people of the Kalahari. Accommodation options are as diverse as the landscape, and vary from camping to homely bed and breakfasts to luxury lodges.

Contact +27 82 492 3469
Email: lochmaree@absamail.co.za

ESTABLISHED ROUTES

Karoo Highlands Route

The route is situated in the southern part of the Northern Cape in South Africa and covers the small Karoo towns of Nieuwoudtville, Calvinia, Williston, Sutherland, Fraserburg, Carnarvon, Loxton and Victoria West and forms the heart of the Great Karoo. The Karoo is the home of peace and tranquillity, where you can recharge your batteries, while exploring the wide open plains dotted with koppies (hills). The Khoi and San people, who left their legacy as art on the rocks, gave the Karoo its name. The Route offers culture, adventure and incredible natural beauty with many unique experiences such as stargazing at the world's largest astronomical observatory at Sutherland, Carnarvon's Square Kilometre Array (SKA) radio telescopes, Karoo architecture and corbelled houses, Anglo-Boer War sites, rock art, ancient Palaeo Surfaces, farm stays and great Karoo Cuisine featuring Karoo lamb and warm hospitality.

Contact: +27 83 231 3094

Email: info@discoversutherland.co.za



Left: The Observatory at Sutherland

Below: Water wheels can be seen in Keimoes and Kakamas



Kokerboom Food and Wine Route

This route features towns and settlements of much of the Green Kalahari and includes Keimoes, Kanoneiland, Kenhardt, Augrabies, Upington and Marchand and offers experiences appealing to families and adventure and sports travellers. Highlights of the route includes the impressive Augrabies Falls, the relaxing hot springs at Riemvasmaak, river rafting, fly fishing, kayaking and river cruises on the mighty Orange River, numerous 4x4, hiking and mountain biking trails and excellent bird watching. Food fundis will be delighted with the wide offering of typical Northern Cape fare and fruits at any one of the coffee shops, restaurants and road stalls along the route. Wine lovers can stock up at any one of the Wine and Brandy estates in the region.

Contact: +27 82 743 1736

Email: maxi@keimoesinfo.co.za

ESTABLISHED ROUTES



Top: Scenic beauty of the Richtersveld

Bottom right: The Orange River forms the border between the Northern Cape and Namibia

Richtersveld Route

The Richtersveld is unique in many ways; this area is the last refuge of Nama people. In recognition of their vanishing lifestyle, and of the rare botanical diversity it helps protect, the Conservancy has been declared the core of the Richtersveld World Heritage Site - one of only eight in the South Africa. Each small village in the Richtersveld has distinctive features and characteristics. The traditional culture of the inhabitants can be explored and enjoyed by visiting these hospitable and friendly people. The |Ai |Ais-Richtersveld National Park form part of the route and is not to be missed.

Contact: +27 82 335 1399 or +27 83 928 3571

Email: mail@richtersveldtours.co.za

Cape to Namibia Route

The route meanders away from the N7 and include small towns, each with its own local flavour and a story to tell. The N7 highway stretches from Cape Town and meanders its way through the Northern Cape before heading into neighboring country Namibia. Crossing from the Western Cape into the Northern Cape, visitors will encounter towns capturing the Nama heritage of the province. Slow down and appreciate the unique stories of the people of Garies, Kamieskroon, Springbok and Steinkopf. The distinctive and enormous megalithic boulders carry the names of early Namakwa travelers and are aptly called the letter stones. During spring time, this route takes visitors into the core of the floral kaleidoscope that is the Namakwa floral season.

Contact +27 53 833 1434

Email: marketing@experiencenortherncape.com





kalahari red dune route

member of the open africa network

SA's warmest welcome



Backpackers Adventure

R 450 (€ 30) per person per day – Accommodation & Activities included

Total: 4 days = R 1,800 (€ 120) per person

Accommodation	Activity
Dune Valley Field Chalet	Bird Watching
Boesmanrus Grass Huts Aunt Koera se Kombuis (Dinner and Breakfast)	Sandboarding @ Rooiuidin Guest Farm
Kalahari Trails Nature Reserve	Night Drive & Morning Walk
Inkbospan Guest Farm	Game Drive on Loch Maree

This package offers the adventurous backpacker an opportunity to experience the best that the Kalahari Red Dune Route has to offer for less than R500 per day. Activities include bird watching, sandboarding, a night drive and a morning walk with the renowned Kalahari Trails Nature Reserve. Loch Maree Guest Farm provides a game drive that includes a visit to the unique salt pan on the farm.

Please note meals need to be catered for on Day 1, 3 & 4

Culture and Cuisine Experience

R 1,000 (€ 65) per person per day – Accommodation, Meals & Activities included

Total: 5 days = R 5,000 (€ 325) per person

Accommodation	Activity
Boesmanrus Grass Huts includes (Dinner and breakfast at Aunt Koera se Kombuis)	Kalahari Guesthouse and Farm Stall/ Breakfast Rooipan Guest House/Lunch
Molopo Lodge	Living Museum
Rooiuidin Guest Farm (Homestay)	Self-drive through Park
Kalahari Info and Tented Camp	Sandboarding @ Rooiuidin Guest Farm (lunch provided)
Rea Guest House & Bushcamp	Game Drive on Loch Maree Guest Farm

The Kalahari Red Dune Route is rich in culture and provides visitors an opportunity to also experience the unique traditional cuisine of the area and its people.

The Kalahari Gemsbok Park was first proclaimed in 1931 and nearly 70 years later the Xhomi San, who was dispossessed through the process, won a land claim to return to their ancestral home.

This experience allows visitors to enjoy unique local cuisine, experience local culture and experience one of Africa's renowned conservation areas, the Kgalagadi

Transfrontier Park.



Glamping

R 1,125 (€ 75) per person per day – Accommodation, Meals & Activities included

Total: 4 days = R 4,500 (€ 300) per person

Accommodation	Activity
Kalahari Guest House and Farm Stall	Springbok Pie at Diamond T café
Erin Game Ranch Aunt Koera se Kombuis (Dinner and Breakfast)	Includes bush walk with local guide and tracker and Living Museum
Kalahari Trails Nature Reserve	Night Drive & Morning Walk
Kalahari Info and Tented Camp	Sandboarding @ Rooiuidin Guest Farm

Glamping - Camping without the fuss! The Kalahari Red Dune Route offers visitors an opportunity to get close to nature without having to pitch a tent. Activities include a visit to a Living Museum, Dune Boarding and a guided walk on Erin Game Farm.

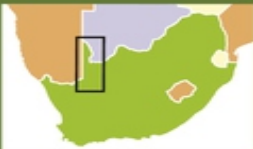
ENQUIRIES

Retha Stadler

Cell: +27 82 492 3469

rooiuidinroete@hotmail.co.za

www.openafrica.org/kalaharireduneroute



4x4 Adventure

R 550 (€ 36) per person per day – Accommodation, Meals & Activities included

Total: 6 days = R 3,300 (€ 220) per person

Accommodation

Vischgat Game Lodge

The Kalahari is known for its red sand dunes and 4x4

Loch Broom Paradys

adventures. With wide open spaces, a rich variety of wildlife and

Zoutpanputs

numerous 4x4 tracks through farms that adjoin the Kgalagadi

Loch Maree Guest Farm

Transfrontier Park, this is a 4x4 enthusiasts dream come true.

Klip Kolk Guest House

This experience can be tailored to beginner or experienced

Rooiduin Guest House

drivers who want to push their vehicles to the limit.



Premier Experience

R 2,500 (€ 165) per person per day – Accommodation, Meals & Activities included

Total: 6 days = R 15,000 (€ 990) per person

Accommodation

Activity

Roopan Guest House

Sundowner on dunes

The Kalahari Red Dune Route also offers one of southern Africa's most premier

Living Museum

experiences in partnership with the

Kgalagadi Lodge

Self-drive through Park

community-owned !Xaus Lodge. !Xaus,

!Xaus Lodge

Walks, game drives, dinner on the dunes

roughly translated as 'heart' is owned by the

Rooiduin Guest Farm

Sand Boarding

Khomani San and located in the Kgalagadi

Rea Guest House

Day of leisure

Transfrontier Park. This experience is

tailored to travellers who would like a little

luxury while experiencing the natural beauty

of the Kalahari.

Kalahari Sands Guest House

Or

Kalahari Camel Thorn B & B

Or

Askham Chalets

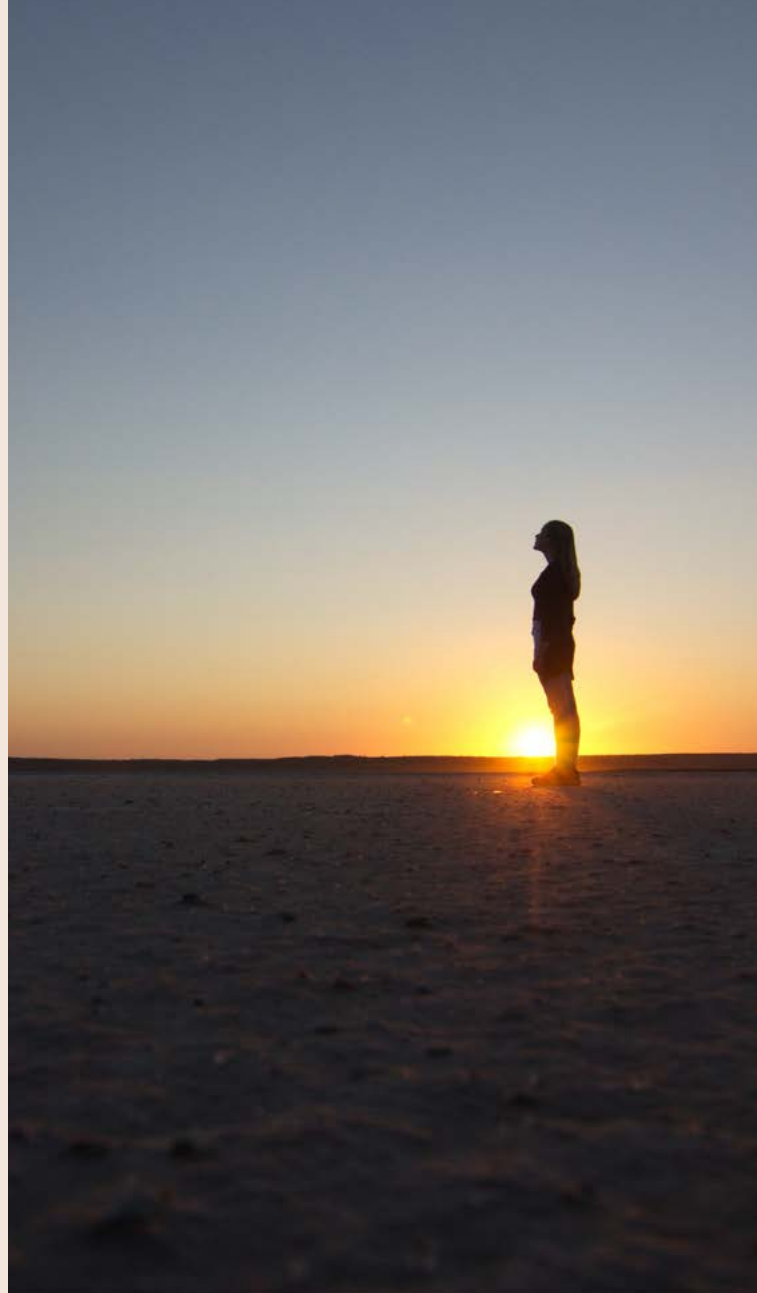
Or

Askham Post Office

It includes activities like game drives, visits to

the Living Museum and sundowners on the

dunes and camel rides.



kalahari
red dune
route



member of the open africa network

General Travel Information

Tourist Safety

Though the Northern Cape is a safe haven for tourists, we urge you to take the same precautions you would in any other city or town. Avoid the unnecessary display of valuables and do not walk in deserted places or go out alone at night.

International dialling

The international dialling code for South Africa is 027. The first 0 in the local dialling code falls away eg. 053 833 1434 becomes 027 53 833 1434.

Banking

Most banks are open Mon-Fri 09h00-15h30 & Sat 09h00-11h00. Autobanks are found in bigger towns.

Petrol (Gas)

Though widely available at most towns, we recommend filling up before travelling long distances. On major routes and in bigger towns, petrol stations are open day and night.

Transport

Kimberley has air and rail links with most major South African cities. The luxurious Blue Train and Rovos Rail travels from Pretoria to Cape Town via Johannesburg and Kimberley, where passengers can board or disembark. Upington also has air links with all major cities in South Africa. Car hire companies are represented at the airports and in major towns.

The Weather

The Northern Cape's weather is typical of desert and semidesert areas. We live in a large, dry region of fluctuating temperatures and varying topographies.

The scant annual rainfall (50-400mm) is unreliable and very much lower than evaporation and, in January, afternoon temperatures are usually between 33-36° Celsius. In 1939, at Goodhouse on the Orange River, an all-time high of 47.8° was recorded! Though somewhat unusual, summer temperatures do sometimes top the 40° mark. Winter days are warm - the onset of night bringing dew and frost to supplement our low rainfall. Sutherland, in the Hantam Karoo, is one of the coldest towns in southern Africa. Its average minimum is -6°! In winter, snow often blankets its surrounding mountains. In general, though, take it that you'll enjoy hot summer days, warm company and chilly nights.



INTO THE WILD

YOUR ADVENTURE
STARTS HERE...



Orange River Rafting



The Ultimate Outdoor Adventure



OUTDOOR
WAREHOUSE

For Every Adventure!



www.umkuluadventures.com
www.orangeriverrafting.com

DIAMOND FIELDS REGION

BOITUMELO JWA SECHABA GUEST HOUSE



KIMBERLEY

Cell: +27 (0) 87 310 5218
or: +27 (0) 87 310 5216
Email: info@bjsguesthouse.co.za
www.bjsguesthouse.co.za

REPA GUEST HOUSE



KIMBERLEY

Cell: +27 (0) 79 517 0022
Tel: +27 (0) 53 861 3132
Fax: 086 607 5832
info@repa.co.za www.repa.co.za

DIAMOND FIELDS REGION

LET THEM TALK VELDT CREATIONS



KIMBERLEY

Masego Moiloa
Cell: +27 (0) 872 113 9949

ROODEPAN GUEST HOUSE



KIMBERLEY

Cell: +27 (0) 81 354 1173
Cell: +27 (0) 83 737 2205
Tel/Fax: +27 (0) 53 873 2930
Email: roodepanguesthouse@8tmail.com
www.roodepanguesthouse.co.za

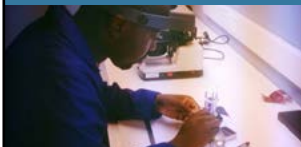
NATIVE MINDS HERITAGE TOURS



KIMBERLEY

Boitumelo Joy Phirisi
Cell: +27 (0) 78 069 5104
Email: nativeminds396@gmail.com

OUTDOOR CRYSTALLIZED GEMS



KIMBERLEY

Robin Bhebhe
Cell: +27 (0) 72 801 9938
Email: bhebbers1@gmail.com

LERUO'S GUEST HOUSE



KIMBERLEY

Cell: +27 (0) 83 494 4350
Tel: +27 (0) 53 861 4587
Fax: +27 (0) 53 861 3660
Email: pmajosi@gmail.com

AFRICAN DIAMOND BOUTIQUE GUEST HOUSE



KIMBERLEY

Cell: +27 (0) 71 052 7040
Tel: +27 (0) 53 842 1854
Fax: 086 608 6246
Email: reception@afriadiamond.co.za

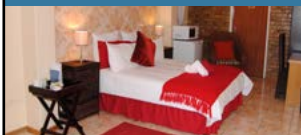
UBUNTU GUEST HOUSE



KIMBERLEY

Cell: +27 (0) 71 499 2211
Tel/Fax: +27 (0) 53 832 7000
Email: info@ubuntuguesthouse.co.za

IBHOTWE GUEST HOUSE



KIMBERLEY

Cell: +27 (0) 73 735 0358
Cell: +27 (0) 84 818 4005
Fax: 086 661 0729
Email: info@ibhotwe.co.za
www.repa.co.za

TAXI TO GALESHEWE TOURS



KIMBERLEY

Cell: +27 (0) 83 763 5172
Email: thamisikhupelo@gmail.com
http://taxitogaleshewe.wozaonline.co.za

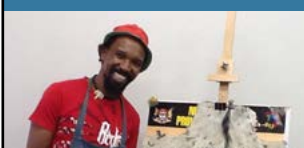
!XUN AND KHWE CULTURAL VILLAGES



KIMBERLEY REGION

Tel: +27 (0) 53 030 0035
Fax: +27 (0) 86 723 3008
Email: villages@sanfootprints.org.za
Email: mariomahongo@gmail.com

DAWSON LEMMA ARTS & CRAFTS



KIMBERLEY

Phillip Tshepo Matlhogo
Cell: +27 (0) 72 341 6768

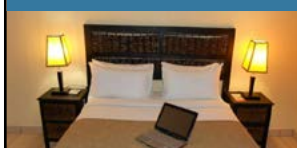
WORLD WIDE TRAVEL AND TOURS



KIMBERLEY

Cell: +27 (0) 83 261 2373
Tel: +27 (0) 53 831 2771
Fax: +27 (0) 53 831 2778
Email: zbwookey@wwidetravel.co.za
www.worldwidetravelkby.co.za

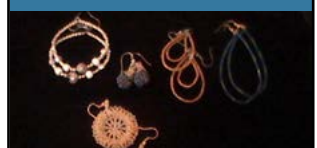
MAGELENDZE GUEST LODGE



WARRENTON

Cell: +27 (0) 82 453 2372
Tel: +27 (0) 60 898 5152
Fax: +27 (0) 53 497 5576
Email: eddy@magelevendze.com

LINDI'S BEADS



KIMBERLEY

Lindeka Quma
Cell: +27 (0) 72 419 2854
Email: lindekaquma@gmail.com

GREEN KALAHARI REGION

TATA MA TATA TOURS



UPINGTON

Cell: +27 (0) 81 270 0670
Tel: +27 (0) 54 339 1112
Fax: +27 (0) 86 591 3479
Email: edsmith2@webmail.co.za
www.tatamatata.co.za

STRELITZIA GUEST HOUSE



UPINGTON

Cell: +27 (0) 71 365 6090
Tel / Fax: +27 (0) 54 331 1519
Email: mandelasflower@gmail.com

RIEMVASMAAK TOURISM



Henry Basson
Cell: +27 (0) 63 330 0064
Email:
henrybasson858@gmail.com

//URUKE KALAHARI SAN BUSH CAMP ADVENTURES



NEAR KGALAGADI TRANSFRONTIER PARK

Cell: +27 (0) 72 977 0120
Tel: +27 (0) 54 511 0053
Email: vinkie84@gmail.com
bushcamp@sanfootprints.co.za

RU-NA GUEST HOUSE



UPINGTON

Cell: +27 (0) 73 992 5537
Email:
runaguesthouse@gmail.com

ROOIDUIN 4X4 TRAILS AND GUEST FARM



ASKHAM

Cell: +27 (0) 82 589 6659
Email:
lornasny44@gmail.com

ANWIL B&B



UPINGTON

Cell: +27 (0) 54 339 3137
Email: anwilbb@gmail.com

KLASSIQUE GUEST HOUSE



UPINGTON

Cell: +27 (0) 83 435 5095
Email: dklassens2@gmail.com

GREEN KALAHARI REGION

THE PAPER CRAFTS & DESIGNER



RAASWATER, UPINGTON

Themba Masala
Cell: +27 (0) 76 606 5232
Cell: +27 (0) 73 853 4309

SHEPARD WIRE CRAFT



UPINGTON

Vusumzi Dabulamanzi
Cell: +27 (0) 78 433 5935

HIGHWAY GUEST HOUSE



UPINGTON

Cell: +27 (0) 82 728 2474
Cell: +27 (0) 82 057 2963
Email:
highwayguesthouse@musicaworld.co.za

KALAHARI RED DUNE ROUTE



ASKHAM

Retha stadler
Cell: +27 (0) 82 492 3469
Email: lochmaree@absmail.co.za

KALAHARI GUEST HOUSE



UPINGTON

Cell: +27 (0) 83 494 0298
Tel: +27 (0) 54 339 3474
Email: tmkalahari@gmail.com

!KXUIN !KWA KALAHARI EXPERIENCE



ASKHAM

Luce Steenkamp
Tel: +27 (0) 87 285 4299
Cell: +27 (0) 76 613 9095
Email:
bushmancouncil@khomanisan.com

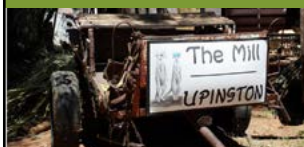
KOKERBOOM FOOD AND WINE ROUTE



UPINGTON

Martien Bezuidenhout
Cell: +27 (0) 83 257 4736
Email: marketing@bezael.co.za

THE MILL CRAFTERS COMMUNITY CENTRE



UPINGTON

Cell: +27 (0) 72 180 2652
Email:
themillupingtonza@gmail.com

GREEN KALAHARI REGION

PHRONESIS TRAINING & BENEFICIATION CENTRE



UPINGTON

Beuty Magudu +27 84 620 7991 Email: beauty.mbangula@gmail.com

KALAHARI REGION

HOTEL KGALAGADI



KURUMAN

Cell: +27 (0) 72 457 6102
Tel: +27 (0) 53 774 1990
Email: mnkadimang@yahoo.com

AUDREY'S B&B



KURUMAN

Cell: +27 (0) 72 372 8857
Email: chelsea1@lantic.net

THUBA KOBO SEGOLE GUEST HOUSE



KURUMAN

Cell: +27 (0) 72 722 9655
Tel: +27 (0) 53 712 0301
Fax: +27 (0) 86 219 0601
Email: tksguesthouse@telkomsa.net

LEGAENG GUEST HOUSE



KURUMAN

Cell: +27 (0) 82 784 5606
Tel / Fax: +27 (0) 53 773 1977
Email: mariamolema@yahoo.com

LETONA GUEST HOUSE



KURUMAN

Cell: +27 (0) 82 442 7696
Tel: +27 (0) 53 712 3073
Fax: 086 610 1333
Email: letona.tourism@gmail.com

MATHANTHAS ARTS & CRAFTS



KURUMAN

David Bantsheng
Cell: +27 (0) 82 583 1079

KALAHARI REGION

AGANANG HAND WORK



KURUMAN

Ruth Segoro
Cell: +27 (0) 76 775 8026



KAROO REGION

SAM BOOI



DE AAR

Poet, musician and maker of
traditional instruments
Cell: +27 (0) 74 405 9919

SAKHISIZWE TOURS



COLESBERG

Mbulelo Kafi
Cell: +27 (0) 76 944 0065
Email: mbulelokafi@yahoo.com

DE AAR CRAFTERS



DE AAR

Samantha Mphepheto
Cell: +27 (0) 73 170 8973

WIRE CRAFTING



COLESBERG

Peter Charles Coakley
Cell: +27 (0) 73 994 2336

Please support our community entrepreneurs
during your visit to the Northern Cape!

NAMAKWA REGION

GAMII GOAS GUEST HOUSE



PORT NOLLOTH

Cell: +27 (0) 73 677 4014
Tel: +27 (0) 27 851 7180
Fax: 086 615 5110
Email: miranda.manro@gmail.com
www.gamigoas.co.za

NAMA 4X4 TRAILS



AGGENEYS

Cell: +27 (0) 84 465 2365
Email: hannel@telkomsa.net
www.amam.co.za

VERA'S TRADITIONAL KOOKSKERM AND LELIEFONTEIN LODGE



LELIEFONTEIN

Turn off the N7 to Kamieskroon,
30km drive to Leliesfontein
Cell: +27 (0) 82 386 5386
Tel: +27 (0) 27 672 1972

ROOIBERG GUEST HOUSE



EKSTEEFONTEIN

Cell: +27 (0) 71 556 0951
Email: eksteenfontein@lantic.net

KOM-RUS-'N-BIETJIE GUEST HOUSE



EKSTEEFONTEIN

Cell: +27 (0) 79 415 4070
Email:
stiena.farmer@gmail.com

MOUNTAIN VALLEY GUEST HOUSE



KUBOES

Kuboes Municipality
Mr Willem Hans or Mr Gert Links
Tel: +27 (0) 27 831 2375
Tel: +27 (0) 27 831 1041

MURE STEINKOPF // AUSA CULTURAL EXPERIENCE



STEINKOPF

Cell: +27 (0) 74 663 5873
Email: lizelle@muresa.co.za

OPEN AFRICA RICHTERSVELD ROUTE



RICHTERSVELD

Cell: +27 (0) 82 335 1399
Cell: +27 (0) 83 928 3571
Email: mail@richtersveldtours.co.za
www.openafrica.org/route/
richtersveld-route

NAMAKWA REGION

SCOTIA RESTAURANT



PORT NOLLOTH

Cell: 082 598 2146
Tel: 027 851 8245
Email: scotiarestuarant@gmail.com
www.scotiainn.co.za

DIE POTPEL TOERISTE PLAAS



STEINKOPF

Cell: +27 78 847 1515
Email:
bokka.diepotlepel@gmail.com

DIAMOND COAST ROUTE



PORT NOLLOTH

Dudley Wessels
Cell: +27 (0) 83 305 2569
Email: peebs@kingsley.co.za

STEINKOPF ART GALLERY



STEINKOPF

Granville Cloete
Cell: +27 (0) 74 671 0770

UNDULATA COUNTRY LODGE



SPRINGBOK

Cell: +27 (0) 83 271 7977
Tel: +27 (0) 27 712 3732
Email: undulatalodge@telkomsa.net

JO'S GUEST HOUSE



CALVINIA

Cell: +27 (0) 84 461 3773
Tel: +27 (0) 27 341 2247
Fax: 086 651 9352
Email: joscalvinia@gmail.com

HANTAM KRAAL - RESTAURANT



CALVINIA

Cell: 084 461 3773
Tel: 027 341 2247
Fax: 086 651 9352
Email: joscalvinia@gmail.com

AUKWATOWA TOURS



PORT NOLLOTH & RICHTERSVELD

Cell: +27 (0) 73 651 8833
Tel: +27 (0) 27 851 8026
Email: conrad@aukwatowa.co.za
www.aukwatowatours.co.za



Springbok (continue)

Springbok Caravan Park 027 718 1584
The Olive Tree Guest House 027 718 1808 ****

Steinkopf

Cedswill Guest House 027 721 8562
Kookfontein Chalets 027 721 8841

Sutherland

Galileo Cottage 023 571 1959
Kambo-kind B&B 023 571 1405 ****
Skitterland Guesthouse 023 571 1115 ****
Fiddlers Creek Camp 027 761 8953
Rhenoster Valley Guest Farm 023 571 2780
Rooikloof Guest Farm 023 571 2607 ***
Alpha B&B 023 571 1257
Blesfontein Guest Farm 023 571 2631
Sutherland Guest House 023 571 1257 **
Kosmos Self Catering 023 571 1192
Rosa Villa Guest House 023 571 2798
Jupiter B&B 023 571 1340
Primrose Cottage 023 571 1087
Rû-veld Guest House 023 571 1063
Silhouette Guest Farm 023 571 2616

Violsdrif

Violsdrift Lodge 027 761 8778

Williston

Soek-'n-Slapie Guest House 053 391 3146 ***
Annie's Inn 053 391 3541
Hawthorne Country House 082 342 4144
Die Ark 053 391 3659
Williston B&B 053 391 3069 **

The publisher and Northern Cape Tourism Authority cannot be held responsible for the correctness of the above accommodation listing.

**For more and updated
accommodation options please visit
www.experiencenortherncape.com**

IMPRESSUM

This Northern Cape Tourism Guide is published by the Northern Cape Tourism Authority for free distribution.

Concept, Design, Photography: Wolf Publications

© of publication: Northern Cape Tourism Authority

© for images: NCTA, Heiko Wolf, Malindi Strydom,
Wolf Photography, Steve Newbould, Dave Southwood,
and various product owners.

5th edition 2015

WELCOME TO LUXURY

Visit www.kimberleyanne.co.za
or phone us on +27 53 492 0004

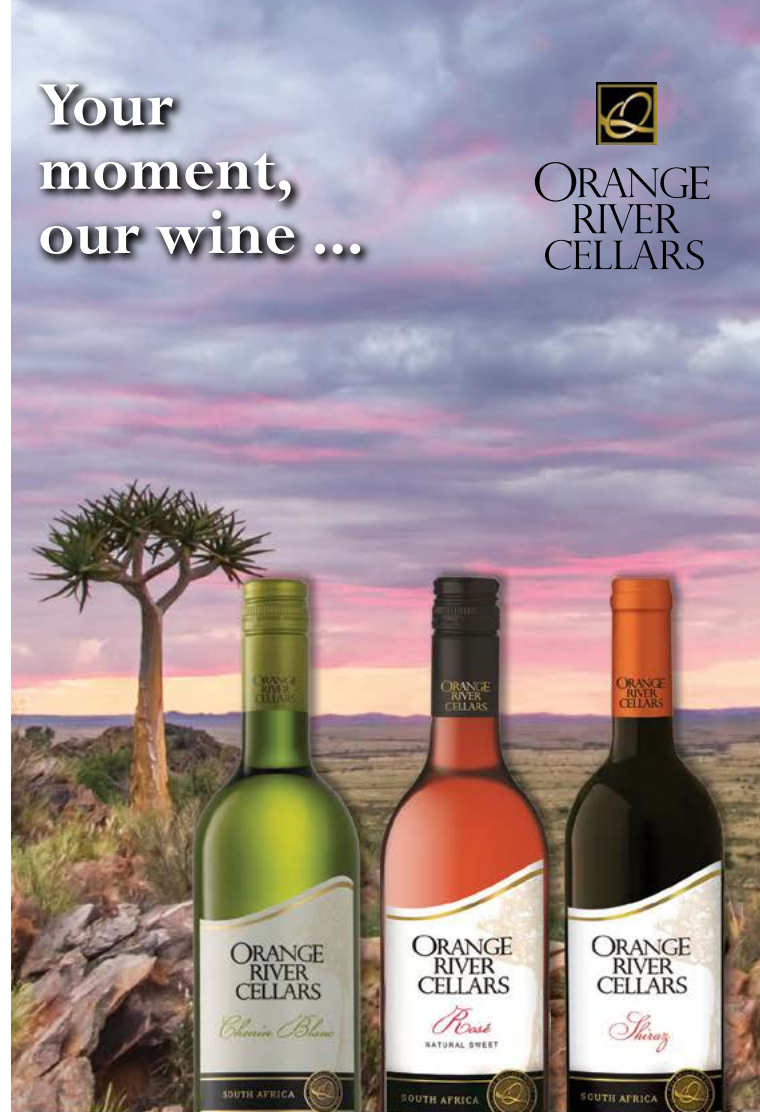


KIMBERLEY ANNE
★★★★ *Small Luxury Hotel*

Your moment, our wine ...



**ORANGE
RIVER
CELLARS**



This is the world of Orange River Cellars. Grapes cultivated on the banks of the Orange River, wines crafted in our Northern Cape cellars. Flavoured by the unique wilderness landscape where the purity of the nature combines with the warm soul of the sun. For your moment. With our wine.

Industria Rd, Upington | Tel: 054 337 8800 | info@orangeriverwines.com
www.orangeriverwines.com | [f](https://www.facebook.com/Orangeriverwines) Orange River Cellars

Not for Sale to Persons Under the Age of 18.



NORTHERN CAPE TOURISM AUTHORITY

Tel: +27 (0) 53 832 2657 · Fax +27 (0) 53 831 2937

Email: marketing@experiencenortherncape.com

www.experiencenortherncape.com

